



DUCTED EVAPORATOR BLOWER UNIT
MODEL PFD, PHD

AIR VOLUME RANGE : 1600 TO 26400 CFM
COOLING CAPACITY RANGE : 62.1 TO 810.4 MBH

Section 4

FEATURES

MODEL 05-01 TO 30-01

CABINET: Cabinets are constructed of heavily zinc coated galvanized steel, chemically cleaned and phosphatized to bond the specially formulated corrosion inhibiting, polyester powder coating.

EVAPORATOR: Evaporator coil are formed of seamless smooth surface or inner grooved copper tubing with mechanically bonded aluminum alloy plate fin slit type.

BLOWER AND MOTOR: Belt driven steel blowers are forward curved, double inlet multi blade centrifugal type and are statically and dynamically balanced for quiet operation. Belt driven unit (05-01 to 30-01), blowers are mounted on steel rigid shaft in heavy duty pillow block ball bearings and driven to desired air flow rated and static pressure by set of V-belt and variable pitch diameter pulleys. Blower motor is internally mounted, equipped with permanently lubricated bearing and internal overload.

AIR FILTER: Air filters are permanent and cleanable type.

OTHERS: The entire unit is thermally and acoustically insulated.

STANDARD COMPONENTS

- Air filters
- Motor with a set of variable pitch diameter pulleys.
- Thermostatic expansion valve.

OPTIONAL COMPONENTS

- Chilled water coil.
- Hot water or steam coil.
- Electronic remoted control unit.

PERFORMANCE DATA

UNIT MODEL PFD, PHD	AIR FLOW CFM	EVAP. TEMP. °F	AIR TEMPERATURE ENTERING EVAPORATOR °FDB					
			62		67		72	
			TOTAL MBH	SENSIBLE MBH	TOTAL MBH	SENSIBLE MBH	TOTAL MBH	SENSIBLE MBH
05-01	2,000	35	71.2	59.1	88.6	54.3	109.0	49.5
		40	57.5	53.2	75.7	49.0	95.4	44.3
		45	44.7	44.7	62.1	43.7	81.8	39.4
		50	31.0	31.0	49.2	39.0	67.4	34.4
09-01	3,000	35	110.6	90.1	137.7	83.1	169.5	76.5
		40	89.5	80.8	117.7	74.9	148.3	68.3
		45	69.4	69.4	96.5	66.6	127.1	60.5
		50	48.3	48.3	76.5	59.2	104.8	52.7
12-01	4,400	35	175.7	137.4	218.7	128.2	269.2	120.0
		40	142.10	121.9	186.9	114.8	235.5	106.5
		45	108.4	107.7	153.2	101.1	201.9	93.7
		50	76.6	76.6	121.6	89.3	166.4	81.1
20-01	6,000	35	201.2	168.3	250.4	154.1	308.2	139.8
		40	162.0	151.8	214.0	139.5	269.6	125.3
		45	124.1	124.1	175.5	124.7	231.0	111.6
		50	87.7	87.7	139.10	111.5	190.5	97.6
25-01	8,000	35	286.6	232.5	359.9	216.5	445.3	199.7
		40	231.8	209.1	304.9	193.7	387.3	177.7
		45	176.9	176.9	250.0	172.5	329.3	156.6
		50	125.1	125.1	198.0	153.2	271.3	136.4
30-01	10,000	35	309.1	266.5	386.2	243.6	308.1	199.3
		40	262.4	247.0	340.2	225.5	262.0	180.2
		45	231.7	231.7	285.9	202.1	208.8	158.7
		50	191.1	197.9	230.0	184.6	151.5	136.1

AT 80°FDB ENTERING AIR TEMPERATURE

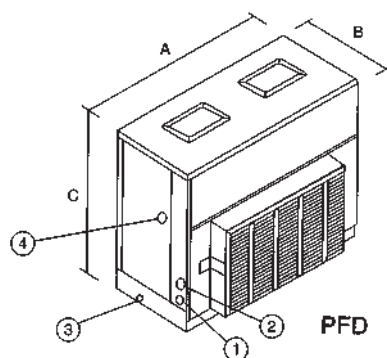
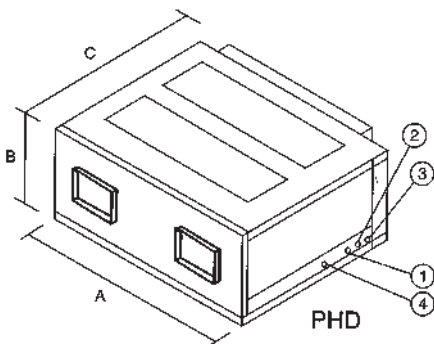
AIR FLOW CORRECTION

AIRFLOW CFM	80%	90%	100%	110%	120%
Total capacity	0.97	0.985	1.00	1.015	1.03
Sensible heat	0.90	0.95	1.00	1.048	1.10

Section 4

SPECIFICATIONS

UNIT MODEL	PFD,PHD	05-01	09-01	12-01	20-01	25-01	30-01
NOMINAL AIR FLOW RATE	CFM	2,000	3,000	4,400	6,000	8,000	10,000
	L/S	944	1,416	2,076	2,831	3,775	4,719
AIR FLOW RATE RANGE	CFM	1,600-2,400	2,400-3,600	3,520-5,280	4,800-7,200	6,400-9,600	8,000-12,000
	LS	755-1,133	1,133-1,699	1,661-2,492	2,265-3,398	3,020-4,530	3,775-5,663
NOMINAL COOLING CAPACITY AT 67°FWB EAT/45°F SST	MBH	62.1	96.5	153.2	175.5	250.0	285.9
	KW	18.2	28.28	44.9	51.43	73.27	83.79
POWER SOURCE	V/PH/Hz	380/3/50					
NUMBER OF CIRCUIT		1	1	1	1 OR 2	2	2
CONNECTIONS							
SUCTION-QUANTITY..ODF.	INCH	7/8	1-1/8	1-3/8	1-3/8 OR 2...1-3/8	2..1-5/8	2.1-5/8
LIQUID-QUANTITY..ODF.	INCH	1/2	5/8	5/8	7/8 OR 2..7/8	2..3/4	2...3/4
DRAIN.	INCH	1 MPT					
UNIT DIMENSION(mm.)	A	930/930	1,350/1,350	1,480/1,480	1,480/1,480	1,960/1,960	2,100/2,100
	B	535/500	535/500	660/600	760/700	760/700	820/760
	C	1,100/1,155	1,100/1,155	1,100/1,180	1,300/1,380	1,300/1,380	1,400/1,480
UNIT OPERATING WEIGHT	KGS	95	140	180	220	250	530
EVAPORATOR COIL							
TYPE		PLATE FIN (SLIT TYPE) BONDED WITH PLAIN OR INNER GROOVE COPPER TUBES					
FACE AREA	FT ²	4.7	7.0	9.1	11.8	16.5	20.0
NO. OF ROWS		3	3	3	3	3	3
NO. OF FIN PER INCH		12	14	14	14	14	14
EVAPORATOR FAN							
TYPE		DOUBLE INLET MULTI BLADE CENTRIFUGAL (DWDI)					
QUANTITY		1	2	2	2	2	2
DIAMETER/WIDTH	INCH	10/10	10/10	12/12	15/11	15/15	15/15
DRIVEN METHOD		BELT					
MAXIMUM EXT. STATIC	INCH-H ₂ O	1.0	1.0	1.0	2.0	2.0	2.0
EVAPORATOR MOTOR							
TYPE		TOTALLY ENCLOSED FAN COOLED INDUCTION MOTOR					
QUANTITY		1	1	1	1	1	1
POWER OUTPUT	HP.	1	1	2	3	5	7.5
RPM		1,500	1,500	1,500	1,500	1,500	1,500
FULL LOAD AMP.	Amp.	1.8	1.8	3.5	4.9	8.0	11.5
AIR FILTER							
TYPE		PERMANENT AND WASHABLE ALUMINIUM					
QUANTITY(PFD,PHD)		2/2	2/2	2/2	4/2	4/3	6/3
THICKNESS	INCH	1	1	2	2	2	2
SIZE (inch)	PFD	25X14-3/8	25X21-3/4	25X24-1/2	16-1/4X24-1/2	16-1/4X33-7/8	18-3/4X24-3/4
	PHD	15-3/4X15-3/8	15-3/4X23-7/8	19-3/4X26-3/8	23-5/8X26-3/8	23-5/8X23-7/8	26X24-3/4
TYPE OF REFRIGERANT		R-22					
STANDARD COMPONENT							
REFRIGERANT		HOLDING BY NITROGEN FROM FACTORY					
METERING DEVICES		THERMOSTATIC EXPANSION VALVE					
FAN PULLEY		FIXED PITCH DIAMETER					
MOTOR PULLEY		VARIABLE PITCH DIAMETER					
OPTIONAL COMPONENT		MOTOR CONTACTOR, ROOM THERMOSTAT AND CHILLED WATER COIL.					



- 1) SUCTION CONN.
- 2) LIQUID CONN.
- 3) MPT DRAIN CONN.
- 4) ELECTRICAL CONN.

Section 4

BLOWER PERFORMANCE

* Evaporator blower unit model 05-01 to 30-01 are possible to adjust RPM of blower to suit the external static pressure. Variable pitch motor pulley is provided for field adjustment.

UNIT MODEL PFD, PHD	AIR FLOW CFM	EXTERNAL STATIC PRESSURE INCH WG													
		0.2		0.4		0.6		0.8		1.0		1.5		2.0	
		RPM	BHP	RPM	BHP	RPM	BHP	RPM	BHP	RPM	BHP	RPM	BHP	RPM	BHP
05-01	1,600	656	0.28	716	0.32	803	0.40	881	0.53	953	0.67				
	2,000	689	0.37	735	0.43	822	0.50	915	0.65	1,007	0.80				
	2,400	695	0.50	760	0.60	832	0.70	994	0.80	1,056	0.90				
09-01	2,400	520	0.24	701	0.40	778	0.52	980	0.67	1,096	0.83				
	3,000	543	0.42	730	0.58	801	0.68	987	1.13	1,097	1.35				
	3,600	634	0.59	755	0.75	822	0.85	996	1.25	1,104	1.58				
12-01	3,520	640	0.64	720	0.76	800	0.92	875	1.12	960	1.30				
	4,400	735	1.00	800	1.18	870	1.36	935	1.56	1,005	1.76				
	5,280	845	1.58	905	1.80	965	2.02	1,020	2.22	1,080	2.44				
20-01	4,800	495	0.82	565	1.04	640	1.24	710	1.46	780	1.94	913	3.10	1,034	4.51
	6,000	515	1.44	650	1.64	715	1.86	770	2.16	825	2.46	948	3.74	1,058	5.19
	7,200	695	2.30	740	2.62	790	2.94	840	3.24	885	3.54	990	4.95	1,082	6.47
25-01	6,400	472	0.75	523	1.03	570	1.33	613	1.51	665	1.72	725	2.00	785	2.26
	8,000	619	1.78	625	1.83	668	2.23	708	2.44	740	2.68	795	2.96	845	3.26
	9,600	690	2.66	724	3.07	758	3.52	790	3.75	830	4.02	875	4.44	920	4.8
30-01	8,000					656	2.1	713	2.4	771	2.7	900	3.7	1,027	5.0
	10,000					701	3.0	754	3.3	807	3.6	927	4.5	1,035	5.6
	12,000					802	5.2	847	5.5	892	5.9	995	6.8	1,093	7.9

* The driving accessories which are provided from factory are as per table below:

UNIT MODEL PFD, PHD	BLOWER WHEEL					MOTOR					
	SIZE		SHAFT DIA	QUANTITY	PULLEY P.D.	FRAME NO.	OUTPUT		RPM	SHAFT DIA	PULLEY PDR
	DIA	WIDTH					HP.	KW.			
	INCH	INCH	INCH	INCH	INCH	mm.	INCH				
05-01	10	10	1-3/16	1	7.9	80M	1	0.75	1,500	19	3.7-4.7
09-01	10	10	1-3/16	2	7.9	80M	1	0.75	1,500	19	4.3-5.3
12-01	12	12	1-3/16	2	9.9	90L	2	1.50	1,500	24	4.9-5.9
20-01	15	11	1-3/16	2	9.9	100L	3	2.25	1,500	28	4.3-5.3
25-01	15	15	1-3/16	2	12.4	112M	5	3.75	1,500	28	4.9-5.9
30-01	15	15	1-3/16	2	12.4	132S	7.5	5.50	1,500	38	4.9-5.9

RECOMMENDED MATCHING CAPACITY at 80°FDB / 67°FWB ENTERING AIR TEMPERATURE and 95°F AMBIENT TEMPERATURE

OUT DOOR UNIT MODEL	INDOOR UNIT MODLE	AIR FLOW RATE	CAPACITY
		CFM	MBH

SINGLE HERMETIC COMPRESSOR

HJJ 56Z	PFD, PHD 05-01	1,600	57.5
		2,000	58.0
		2,400	58.5
HJJ 60Z	PFD, PHD 05-01	1,600	62.2
		2,000	62.8
		2,400	63.3
PC 05Z	PFD, PHD 05-01	1,600	57.7
		2,000	58.2
		2,400	58.7
PC 06Z	PFD, PHD 05-01	1,600	60.3
		2,000	60.9
		2,400	61.5
PC 09	PFD, PHD 09-01	2,400	92.4
		3,000	93.3
		3,600	94.2
PC 10	PFD, PHD 09-01	2,400	100.5
		3,000	101.5
		3,600	102.5
PC 12	PFD, PHD 12-01	3,520	143.3
		4,400	144.6
		5,280	145.9
PC 15Z	PFD, PHD 12-01	3,520	150.9
		4,400	152.2
		5,280	153.6
PC 15Z	PFD, PHD 20-01	4,800	156.9
		6,000	158.3
		7,200	160.0

OUT DOOR UNIT MODEL	INDOOR UNIT MODLE	AIR FLOW RATE	CAPACITY
		CFM	MBH

DUAL HERMETIC COMPRESSOR

PC 20D	PFD, PHD 20-01	4,800	180.2
		6,000	182.0
		7,200	183.7
PC 25D	PFD, PHD 25-01	6,400	238.7
		8,000	240.9
		9,600	243.0
PC 25D	PFD, PHD 30-01	8,000	248.7
		10,000	250.9
		12,000	253.0
PC 30Z	PFD, PHD 30-01	8,000	293.1
		10,000	296.1
		12,000	298.9

SEMI-HERMETIC COMPRESSOR

PC 15-01	PFD, PHD 12-01	3,520	152.6
		4,400	153.8
		5,280	155.1
PC 15-01	PFD, PHD 20-01	4,800	158.4
		6,000	159.7
		7,200	160.9
PC 20-01	PFD, PHD 20-01	4,800	180.4
		6,000	182.1
		7,200	183.7
PC 25-01	PFD, PHD 25-01	6,400	238.9
		8,000	241.4
		9,600	243.7
PC 25-01	PFD, PHD 30-01	8,000	250.2
		10,000	252.6
		12,000	255.0
PC 30-02	PFD, PHD 30-01	8,000	274.1
		10,000	276.5
		12,000	278.7

SPECIFICATOIN ARE SUBJECT TO CHANGE WITHOUT NOTICE

Section 4

FEATURES

MODEL 35-01 TO 80-01

CABINET: Cabinets are constructed of heavily zinc coated galvanized steel, chemically cleaned and phosphatized to bond the specially formulated corrosion inhibiting, polyester powder coating.

EVAPORATOR: Evaporator coil are formed of seamless smooth surface or inner grooved copper tubing with mechanically bonded aluminum alloy plate fin slit type.

BLOWER AND MOTOR: Belt driven steel blowers are forward curved, double inlet multi blade centrifugal type and are statically and dynamically balanced for quiet operation. Blowers are mounted on steel rigid shaft in heavy duty pillow block ball bearings and driven to desired air flow rated and static pressure by set of V-belt and variable pitch diameter pulleys. Blower motor is internally or externally mounted and equipped with permanently lubricated bearing and internal over-load.

AIR FILTER: Air filters are permanent and cleanable type.

OTHERS: The entire unit is thermally and acoustically insulated.

STANDARD COMPONENTS

- Air filters
- Motor

OPTIONAL COMPONENTS

- Thermostatic expansion valve.
- Chilled water coil.
- Hot water or steam coil.
- Electronic remoted control unit.
- Motor contactor
- Horizontal discharge unit

PERFORMANCE DATA

UNIT MODEL PFD	AIR FLOW CFM (CR)	EVAP. TEMP. F	AIR TEMPERATURE ENTERING EVAPORATOR °FWB					
			62		67		72	
			TOTAL MBH	SENSIBLE MBH	TOTAL MBH	SENSIBLE MBH	TOTAL MBH	SENSIBLE MBH
35-01	12 000 (0.237)	35	393.2	327.0	528.6	314.1	641.4	284.1
		40	322.1	297.2	439.8	278.9	554.8	251.9
		45	251.1	251.1	351.0	245.2	468.0	221.7
		50	179.8	179.8	262.2	213.7	381.3	192.2
40-01	14 000 (0.238)	35	437.5	372.2	588.2	355.0	711.8	317.5
		40	358.4	340.0	489.1	315.6	615.9	282.7
		45	279.3	279.3	390.0	278.3	520.0	249.4
		50	200.2	200.2	290.9	243.5	424.1	217.7
50-01	16 000 (0.238)	35	589.4	464.6	764.4	443.3	1003.1	437.1
		40	482.4	418.5	648.6	395.8	854.1	378.4
		45	375.5	375.3	532.8	350.9	705.0	323.1
		50	268.6	268.6	417.0	308.0	556.0	272.1
60-01	18 000 (0.147)	35	658.9	552.2	852.4	518.8	1074.7	484.5
		40	540.1	500.7	723.7	466.3	933.9	430.1
		45	421.3	421.3	595.0	416.4	793.1	377.6
		50	302.5	302.5	466.3	369.1	652.3	329.0
70-01	20 000 (0.147)	35	775.5	633.0	995.3	596.6	1222.6	549.2
		40	635.8	571.4	845.4	534.8	1071.0	489.8
		45	496.1	496.1	696.5	475.6	919.4	433.6
		50	356.4	356.4	545.6	421.0	767.8	380.7
80-01	22 000 (0.105)	35	899.8	735.6	1150.6	693.4	1409.3	639.4
		40	738.5	664.3	975.8	619.8	1236.9	569.3
		45	577.2	577.2	810.4	553.7	1064.5	480.7
		50	415.8	415.8	640.5	489.3	892.1	433.4

CR: Sensible correction

NOTE:- Sensible capacity is based on 80 F DB entering evaporator air temperature. Above 80 F Db. Add Δ SHC to SENSIBLE and below 80 F DB subtract Δ SHC from SENSIBLE. Δ SHC can be calculated from.

$$\Delta \text{ SHC} = \frac{1.1 (1-\text{CR}) (\text{DB}-80) \text{ CFM}}{1000} = \text{MBH}$$

AIR FLOW CORRECTION MULTIPLIER

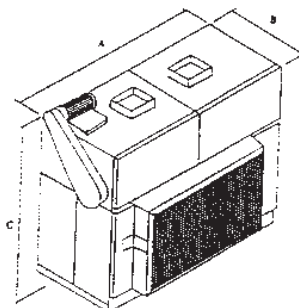
AIRFLOW CFM	80%	90%	100%	110%	120%
Total capacity	0.97	0.985	1.00	1.015	1.03
Sensible heat	0.90	0.95	1.00	1.048	1.10

Section 4

EVAPORATOR BLOWER UNIT

SPECIFICATIONS:

UNIT MODEL	PFD	35.01	40.01	50.01	60.01	70.01	80.01
NOMINAL AIR FLOW	CFM	12,000	14,000	16,000	18,000	20,000	22,000
	L/S	5,660	6,610	7,550	8,495	9,440	10,380
AIR FLOW RATE RANGE	MIN	9,600	11,200	12,800	14,400	16,000	17,600
	MAX	14,400	17,200	19,200	21,600	24,000	26,400
NOMINAL COOLING CAPACITY AT 67° FWB EAT/45° SST	MBH	351.0	390.0	532.8	595.0	696.5	810.4
	KW	102.9	114.3	156.2	174.4	204.1	237.5
POWER SOURCE	V/PH/Hz	380 / 3 /50					
NUMBER OF CIRCUIT		2	2	2	2	2	2
CONNECTIONS							
SUCTION-QUANTITY...ODS INCH		2...1 ³ / ₈		2...1 ⁵ / ₈		2...1 ⁵ / ₈	
LIQUID-QUANTITY...ODS INCH		2...1 ⁷ / ₈		2...7/8		4...7/8	
DRAIN INCH		1 MPT					
UNIT DIMENSION (mm.)	A	2970	2970	3100	3370	3630	3630
	B	1055	1055	940	1245	1315	1390
	C	2180	2330	2535	2860	3070	3275
UNIT OPERATING WEIGHT	KGS/LBS	832/1830	882/1940	1068/2350	1100/2420	1150/2530	1227/2700
EVAPORATOR COIL		PLATE FIN (SLIT TYPE) BONDED WITH PLAIN OR INNER GROOVE COPPER TUBES					
TYPE							
FACE AREA	ft ² /m ²	24/2.22	28.1/2.61	32/2.97	36.1/3.35	40/3.72	44/4.09
NO. OF ROWS		3	3	3	4	4	4
NO. OF FIN PER INCH/METRE		12/472	12/472	12/472	12/472	12/472	14/551
EVAPORATOR FAN		DOUBLE INLET MULTI BLADE CENTRIFUGAL (DWDI)					
TYPE							
QUANTITY		2	2	2	2	2	2
DIAMETER/WIDTH	INCH	18/18	18/18	/18/18	18/18	22/22	25/25
DRIVEN METHOD		BELT					
EVAPORATOR MOTOR		TOTALLY ENCLOSED FAN COOLED INDUCTION MOTOR					
TYPE							
POWER SOURCE	V/PH/Hz	220-380/3/50					
QUANTITY		1	1	1	1	1	1
POWER OUTPUT	HP/KW	7.5/5.5	10.0/7.5	10.0/7.5	10.0/7.5	15.0/11.2	15.011.2
RPM		1440					
FULL LOAD AMP.	A	12.0	16.0	16.0	16.0	25.4	25.4
AIR FILTER		PERMANENT AND WASHABLE ALUMINIUM					
TYPE							
QUANTITY / THICKNESS	INCH	8/2	8/2	10/2	10/2	10/2	10/2
SIZE	(inch)	18x26.5	21x26.5	20x24	24x25	23x28	23x28
TYPE OF REFRIGERANT		R-22					
STANDARD COMPONENT							
REFRIGERANT		HOLDING BY NITROGEN FROM FACTORY (NOT R-22)					
METERING DEVICES		THERMOSTATIC EXPANSION VALVE AS OPTIONAL PART					
FAN PULLEY		FIXED PITCH DIAMETER					
MOTOR PULLEY		VARIABLE PITCH DIAMETER					
MOTOR CONTACTOR		OPTIONAL PARTS					
ROOM THERMOSTAT		OPTIONAL PARTS					
ELECTRONIC THERMOSTAT		AVAILABLE ON OPTIONAL REQUEST					
CHILLED WATER COIL		AVAILABLE ON OPTIONAL REQUEST					
SHIPPING DIMENSION (mm.)	A	3070	3070	3250	3520	3780	3780
	B	1155	1155	1090	1395	1465	1540
	C	2330	2480	2735	3060	3270	3475
SHIPPING WEIGHT	Kgs/Lbs	892/1962	947/2083	1145/2515	1185/2607	1240/2728	1320/2904



PFD 35-01 TO PFD 80-01

Section 4

BLOWER PERFORMANCE

* Evaporator blower unit model 35-01 to 80-01 are possible to adjust RPM of blower to suit the external static pressure. Variable pitch motor pulley is provided for field adjustment. Blower data is inclusive of standard air filters pressure drop.

UNIT MODEL PFD	AIR FLOW CFM	EXTERNAL STATIC PRESSURE INCH WG									
		0.5		1.0		1.5		2.0		2.5	
		RPM	BHP	RPM	BHP	RPM	BHP	RPM	BHP	RPM	BHP
35-01	9,600	500	1.9	639	2.9	777	4.7	877	6.2		
	12,000	560	3.6	680	4.7	785	5.9	901	7.5		
	14,400	605	4.8	724	6.1	825	7.3	911	8.8		
40-01	11,200	532	2.6	663	3.7	780	5.0	899	7.3	970	9.1
	14,000	600	4.5	715	5.8	817	7.0	900	8.2	980	9.5
	17,200	681	8.1	785	9.4	876	10.5	960	12.0	1035	13.2
50-01	12,800	567	3.6	692	4.7	795	5.9	901	7.7	1005	10.4
	16,000	644	6.3	757	7.7	855	9.1	940	10.5	1018	12.1
	19,200	729	10.1	828	11.8	917	13.4	1001	15.1	1076	16.8
60-01	14,400	532	4.5	642	5.8	750	7.5	856	9.7	959	13.0
	18,000	596	7.1	690	9.0	782	10.5	875	12.0	962	14.6
	21,600	666	10.6	747	12.4	828	14.2	905	16.1	982	18.2
70-01	16,000	486	4.7	585	6.5	680	8.7	774	11.3	861	14.2
	20,000	562	8.4	649	10.7	729	13.0	804	15.6	878	18.6
	24,000	618	11.9	703	14.6	770	17.0	838	19.8	905	22.8
80-01	17,600	369	3.9	476	6.4	572	9.1	647	11.6	716	14.3
	22,000	406	6.0	495	8.6	584	11.8	664	15.1	734	18.3
	26,400	447	8.9	526	11.6	602	15.0	676	18.8	745	22.5

* The driving accessories which are provided from factory are as per table below:

UNIT MODEL PFD	BLOWER WHEEL						MOTOR					
	SIZE		SHAFT DIA	QTY.	PULLEY P.D.	FAN SPEED RANGE	FRAME NO.	OUT PUT		RPM	SHAFT DIA	PULLEY PDR
	DIA	WIDTH						HP.	KW.			
	INCH	INCH	MM	INCH	mm.	INCH						
35-01	18	18	45.00	2	12.4	569-685	132S	7.5	5.5	1440	38	4.9-5.9
40-01	18	18	45.00	2	12.4	573-689	132M	10	7.5	1450	38	4.9-5.9
50-01	18	18	45.00	2	12.4	573-689	132M	10	7.5	1450	38	4.9-5.9
60-01	18	18	45.00	2	12.4	573-689	132M	10	7.5	1450	38	4.9-5.9
70-01	22	22	45.00	2	15.4	458-552	160M	15	11	1440	42	4.9-5.9
80-01	25	25	45.00	2	15.4	458-552	160M	15	11	1440	42	4.9-5.9

RECOMMENDED MATCHING CAPACITY at 80°FDB / 67°FWB ENTERING AIR TEMPERATURE and 95°F AMBIENT TEMPERATURE

INDOOR UNIT MODEL	OUTDOOR UNIT MODEL	CAPACITY		AIR FLOW RATE	
		MBH	KW	CFM	L/S
PFD35-01	PC30-01	291.2	85.3	12,000	5,660
	PC35-01	350.0	102.6		
	PC40-01	377.7	110.7		
PFD40-01	PC35-01	360.0	105.5	14,000	6,610
	PC40-01	390.0	114.3		
	PC50-01	440.5	129.1		
PFD50-01	PC50-01	486.2	142.5	16,000	7,550
	PC60-01	548.2	160.7		
PFD60-01	PC60-01	564.1	165.3	18,000	8,500
PFD70-01	PC70-01	698.9	204.8	20,000	9,440
	PC80-01	746.9	218.9		
PFD 80-01	PC70-01	730.8	214.2	22,000	10,380
	PC80-01	783.6	229.7		

SPECIFICATIONS ARE SUBJECT TO CHANGE WITHOUT NOTICE