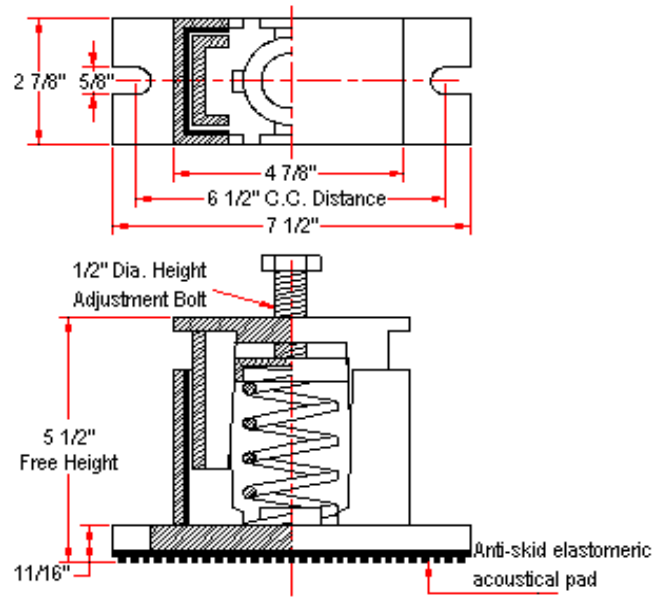
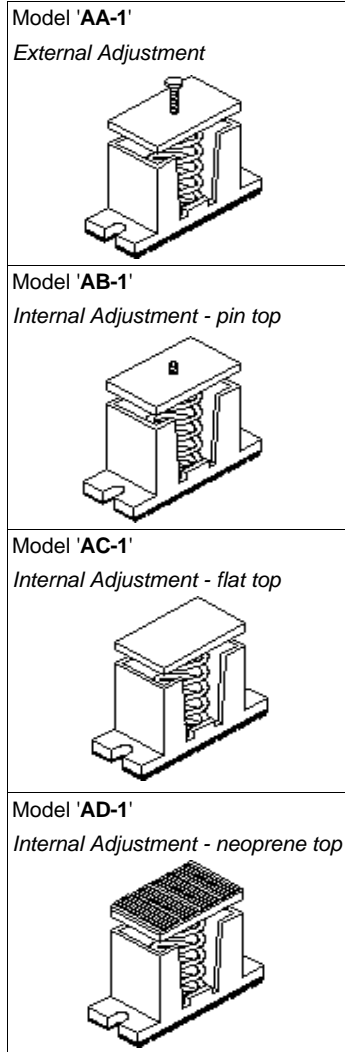


VIBRATION MANAGEMENT CORPORATION

3532-A EAST TC JESTER , BROOKWOOD BUSINESS PARK , HOUSTON , TEXAS 77018 , U.S.A

INTERNET ADDRESS: www.vimco.biz



N.T.S.

NOTES

1. Cast iron housings.
2. Springs have 50% additional travel to solid beyond rated load
3. Isolators should be selected in the range of -30% to +25% of rated load.
4. Adjust mounting so that upper housing clears lower housing by atleast 1/4" but not more than 1/2".
5. Consult spring chart for isolator performance data.
6. Free height indicated above is for AA-1 isolator. AB-1,AC-1 free height is 5 7/8". AD-1 free height is 6 1/8"

| ISOLATOR MODEL | RATED LOAD (lbs) | SOLID LOAD (lbs) |
|----------------|------------------|------------------|
| Ax-1-101 | 56 | 85 |
| Ax-1-102 | 76 | 115 |
| Ax-1-103 | 113 | 170 |
| Ax-1-104 | 150 | 225 |
| Ax-1-105 | 216 | 325 |
| Ax-1-106 | 300 | 450 |
| Ax-1-107 | 400 | 600 |
| Ax-1-108 | 500 | 750 |
| Ax-1-109 | 600 | 900 |
| Ax-1-110 | 733 | 1100 |
| Ax-1-111 | 866 | 1300 |
| Ax-1-112 | 1000 | 1500 |
| Ax-1-101-113 | 507 | 761 |
| Ax-1-102-113 | 526 | 789 |
| Ax-1-103-113 | 554 | 831 |
| Ax-1-104-113 | 582 | 874 |
| Ax-1-105-113 | 647 | 971 |
| Ax-1-106-113 | 716 | 1075 |
| Ax-1-107-113 | 800 | 1200 |
| Ax-1-108-113 | 921 | 1382 |
| Ax-1-109-113 | 1066 | 1600 |
| Ax-1-110-113 | 1106 | 1660 |
| Ax-1-111-113 | 1240 | 1860 |
| Ax-1-112-113 | 1466 | 2200 |

x Choose appropriate isolator model: AA,AB,AC,AD using mounting style diagrams on left.

FEATURES

- * Resilient elastomeric snubbers to prevent metal to metal contact
- * Anti-skid elastomeric acoustical pad
- * Built-in leveling device
- * Spring elements color-coded for easy field verification

Notes / Remarks :

Project :
Client :
Consultant :
Representative :

Title : **AA-1 / AB-1 / AC-1 / AD-1**
Housed Spring Mount
(1" deflection)

Drawing no.
S-2000.02

Rev. 1