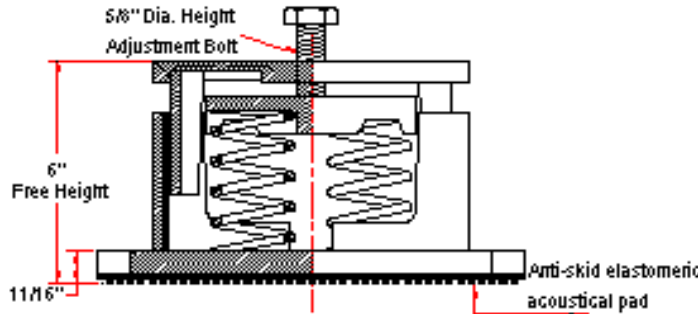
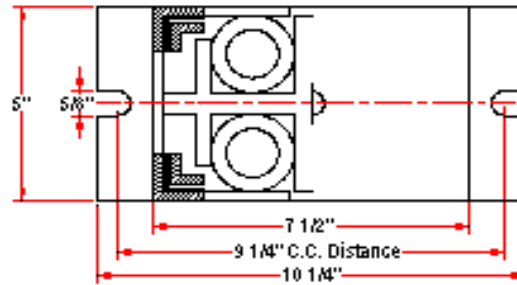
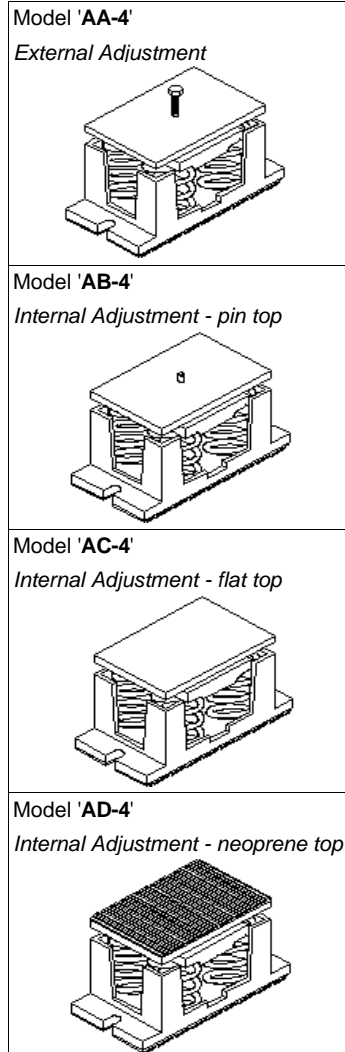


VIBRATION MANAGEMENT CORPORATION

3532-A EAST TC JESTER , BROOKWOOD BUSINESS PARK , HOUSTON , TEXAS 77018 , U.S.A

INTERNET ADDRESS: www.vimco.biz



N.T.S.

NOTES

1. Cast iron housings.
2. Springs have 50% additional travel to solid beyond rated load
3. Isolators should be selected in the range of -30% to +25% of rated load.
4. Adjust mounting so that upper housing clears lower housing by atleast 1/4" but not more than 1/2".
5. Consult spring chart for isolator performance data.
6. Free height indicated above is for AA-1 isolator.
AB-1,AC-1 free height is 5 7/8". AD-1 free height is 6 1/8"

| ISOLATOR MODEL | RATED LOAD (lbs) | SOLID LOAD (lbs) |
|----------------|------------------|------------------|
| Ax-4-101 | 224 | 340 |
| Ax-4-102 | 304 | 460 |
| Ax-4-103 | 452 | 680 |
| Ax-4-104 | 600 | 900 |
| Ax-4-105 | 864 | 1300 |
| Ax-4-106 | 1200 | 1800 |
| Ax-4-107 | 1600 | 2400 |
| Ax-4-108 | 2000 | 3000 |
| Ax-4-109 | 2400 | 3600 |
| Ax-4-110 | 2932 | 4400 |
| Ax-4-111 | 3464 | 5200 |
| Ax-4-112 | 4000 | 6000 |
| Ax-4-101-113 | 2028 | 3044 |
| Ax-4-102-113 | 2104 | 3156 |
| Ax-4-103-113 | 2216 | 3324 |
| Ax-4-104-113 | 2328 | 3496 |
| Ax-4-105-113 | 2588 | 3884 |
| Ax-4-106-113 | 2864 | 4300 |
| Ax-4-107-113 | 3200 | 4800 |
| Ax-4-108-113 | 3684 | 5528 |
| Ax-4-109-113 | 4264 | 6400 |
| Ax-4-110-113 | 4424 | 6640 |
| Ax-4-111-113 | 4960 | 7440 |
| Ax-4-112-113 | 5864 | 8800 |

x Choose appropriate isolator model: AA,AB,AC,AD using mounting style diagrams on left.

FEATURES

- * Resilient elastomeric snubbers to prevent metal to metal contact
- * Anti-skid elastomeric acoustical pad
- * Built-in leveling device
- * Spring elements color-coded for easy field verification

Notes / Remarks :

Project :
Client :
Consultant :
Representative :

Title : **AA-4 / AB-4 / AC-4 / AD-4**
Housed Spring Mount
(1" deflection)

Drawing no.
S-2000.04

Rev. 1