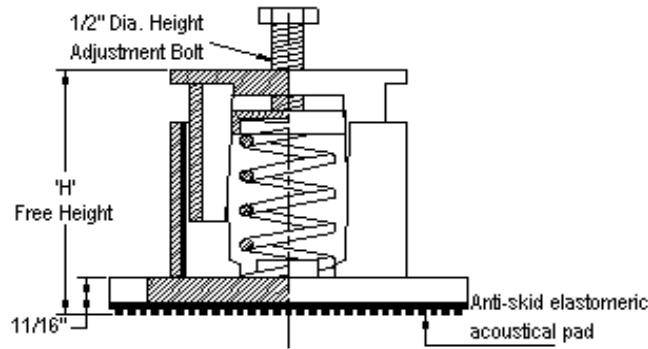
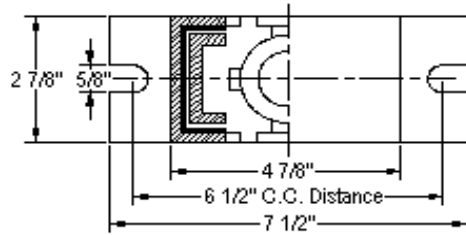
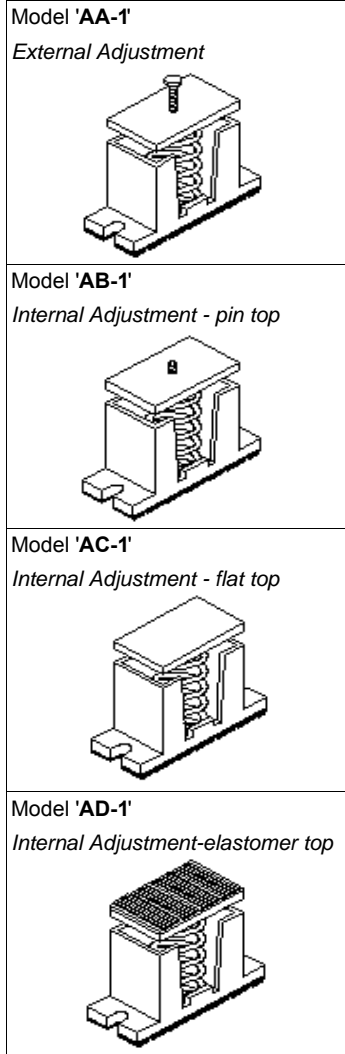


VIBRATION MANAGEMENT CORPORATION

5930 THOMAS ROAD , HOUSTON , TEXAS 77041 , U.S.A

INTERNET ADDRESS: www.vimco.biz



N.T.S.

NOTES

1. Cast iron housings.
2. Springs have 50% additional travel to solid beyond rated load.
3. Isolators should be selected in the range of -30% to +25% of rated load.
4. Adjust mounting so that upper housing clears lower housing by atleast 1/4" but not more than 1/2".
5. Consult spring chart for isolator performance data.
6. Free height indicated above is for AA-1 isolator. For AB-1,AC-1 add 3/8". For AD-1 add 5/8"

ISOLATOR MODEL	RATED LOAD (lbs)	SOLID LOAD (lbs)	H (inches)
Ax-1-081	32	48	5-1/2"
Ax-1-082	50	76	
Ax-1-083	89	134	
Ax-1-084	158	237	
Ax-1-085	280	420	
Ax-1-086	360	540	
Ax-1-087	485	728	
Ax-1-140	66	100	6-1/2"
Ax-1-141	133	200	
Ax-1-142	250	375	
Ax-1-143	333	500	
Ax-1-144	476	714	
Ax-1-147	953	1430	
Ax-1-148A	1261	1892	
Ax-1-140-146B	460	690	
Ax-1-141-146B	518	778	
Ax-1-142-146B	650	976	
Ax-1-143-146B	733	1100	
Ax-1-144-146B	876	1314	
Ax-1-147-146B	1353	2030	
Ax-1-148A-146B	1661	2492	

x Choose appropriate isolator model: AA,AB,AC,AD using mounting style diagrams on left.

FEATURES

- * Resilient elastomeric snubbers to prevent metal to metal contact
- * Anti-skid elastomeric acoustical pad
- * Built-in leveling device
- * High deflection, low natural frequency
- * Spring elements color-coded for easy field verification

Notes / Remarks :

Project :
Client :
Consultant :
Representative :

Title : **AA-1 / AB-1 / AC-1 / AD-1**
Housed Spring Mount
(2" deflection)

Drawing no.
S-2000.11

Rev. 2