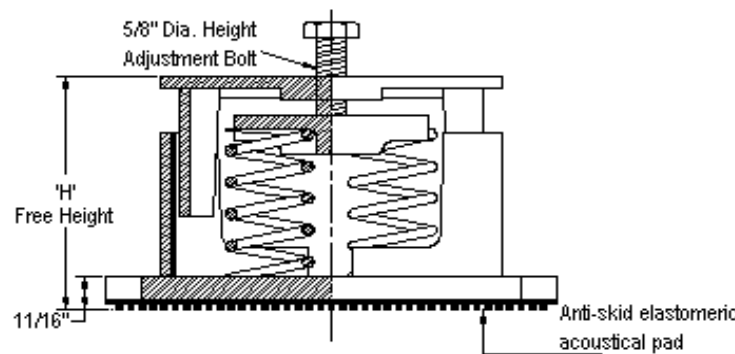
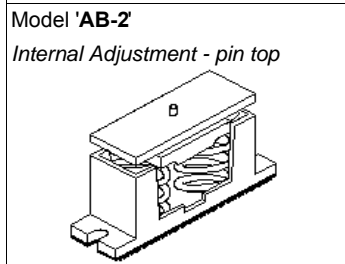
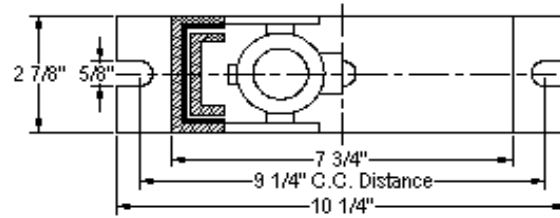
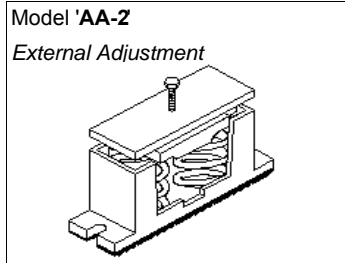


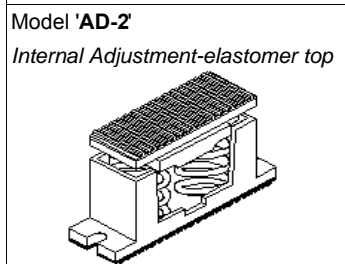
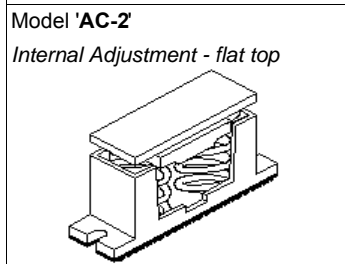
VIBRATION MANAGEMENT CORPORATION

5930 THOMAS ROAD , HOUSTON , TEXAS 77041 , U.S.A

INTERNET ADDRESS: www.vimco.biz



N.T.S.



NOTES

1. Cast iron housings.
2. Springs have 50% additional travel to solid beyond rated load.
3. Isolators should be selected in the range of -30% to +25% of rated load.
4. Adjust mounting so that upper housing clears lower housing by atleast 1/4" but not more than 1/2".
5. Consult spring chart for isolator performance data.
6. Free height indicated above is for AA-2 isolator. For AB-2,AC-2 add 1/2". For AD-2 add 3/4"

ISOLATOR MODEL	RATED LOAD (lbs)	SOLID LOAD (lbs)	H (inches)
Ax-2-081	64	96	5-3/4"
Ax-2-082	100	152	
Ax-2-083	178	268	
Ax-2-084	316	474	
Ax-2-085	560	840	
Ax-2-086	720	1080	
Ax-2-087	970	1456	
Ax-2-140	132	200	6-3/4"
Ax-2-141	266	400	
Ax-2-142	500	750	
Ax-2-143	666	1000	
Ax-2-144	952	1428	
Ax-2-147	1906	2860	
Ax-2-148A	2522	3784	
Ax-2-140-146B	920	1380	
Ax-2-141-146B	1036	1556	
Ax-2-142-146B	1300	1952	
Ax-2-143-146B	1466	2200	
Ax-2-144-146B	1752	2628	
Ax-2-147-146B	2706	4060	
Ax-2-148A-146B	3322	4984	

* Choose appropriate isolator model: AA,AB,AC,AD using mounting style diagrams on left.

FEATURES

- * Resilient elastomeric snubbers to prevent metal to metal contact
- * Anti-skid elastomeric acoustical pad
- * Built-in leveling device
- * High deflection, low natural frequency
- * Spring elements color-coded for easy field verification

Notes / Remarks :

Project :
Client :
Consultant :
Representative :

Title : **AA-2 / AB-2 / AC-2 / AD-2**
Housed Spring Mount
(2" deflection)

Drawing no.
S-2000.12

Rev. 2