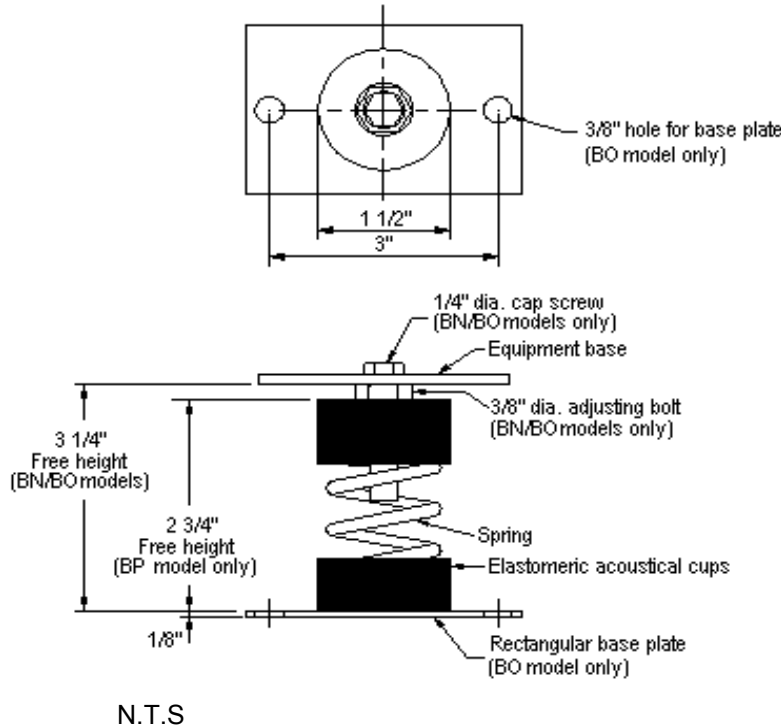
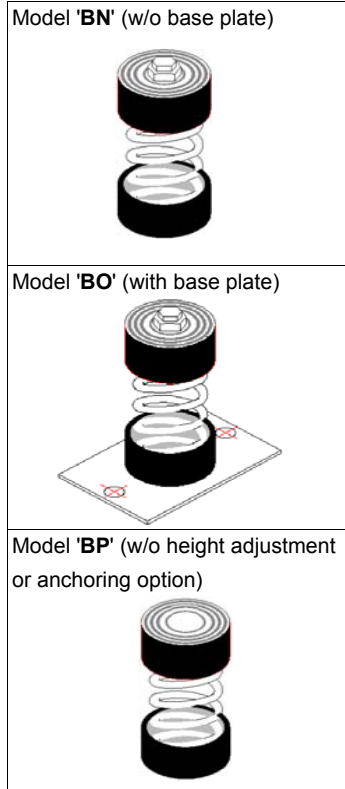


# VIBRATION MANAGEMENT CORPORATION

5930 THOMAS ROAD , HOUSTON , TEXAS 77041 , U.S.A

INTERNET ADDRESS: [www.vimco.biz](http://www.vimco.biz)



ISOLATOR MODEL	RATED LOAD (lbs)	SOLID LOAD (lbs)
Bx-041	15	23
Bx-042	33	50
Bx-043	57	86
Bx-044	76	115
Bx-045	148	222

x Choose appropriate isolator model: BN,BO,BP using mounting style diagrams on left.

### FEATURES

- \* Large diameter laterally stable springs
- \* Weld-free construction
- \* Anti-skid elastomeric acoustical cup
- \* Built-in leveling device
- \* Spring elements color-coded for easy field verification

### NOTES

1. Isolators have a min. operating Kx/Ky ratio of 1.0
2. Springs have 50% additional travel to solid beyond rated load.
3. Isolators should be selected in the range of -30% to +25% of rated load.
4. Consult spring chart for isolator performance data.

Notes / Remarks :	Project :		Title : <b>BN / BO / BP</b> Free-standing Spring Mount Rubber Cup Construction (1" deflection)	Drawing no. <b>S-2025.04</b>  Rev. 1
	Client :			
	Consultant :			
	Representative :			