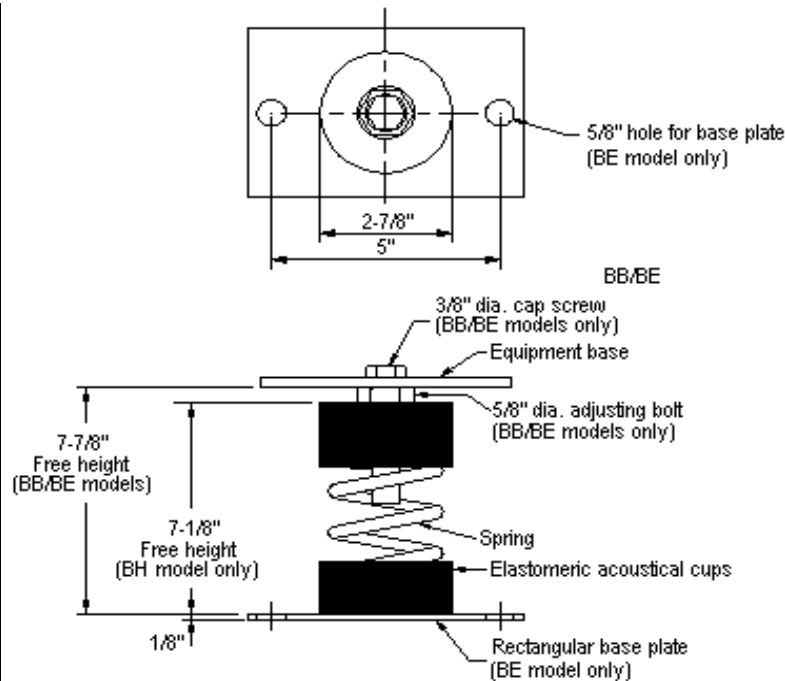
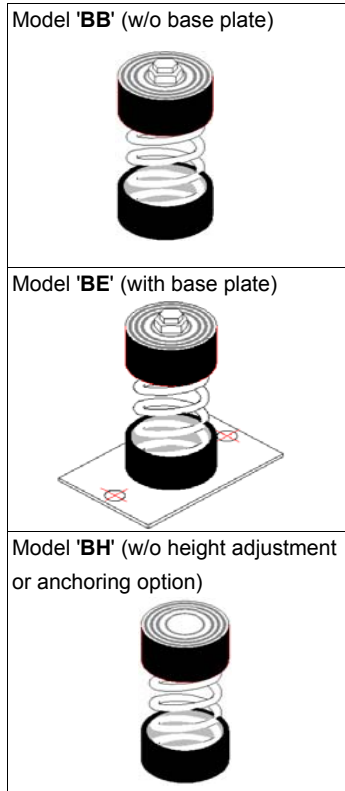


# VIBRATION MANAGEMENT CORPORATION

5930 THOMAS ROAD , HOUSTON , TEXAS 77041 , U.S.A

INTERNET ADDRESS: [www.vimco.biz](http://www.vimco.biz)



ISOLATOR MODEL	RATED LOAD (lbs)	SOLID LOAD (lbs)
Bx-181	86	130
Bx-182	133	200
Bx-183	180	270
Bx-184	266	400
Bx-185	486	730
Bx-186	713	1070
Bx-187	926	1390
Bx-181-199	593	890
Bx-182-199	633	950
Bx-183-199	683	1025
Bx-184-199	783	1175
Bx-185-199	933	1400
Bx-186-199	1233	1850
Bx-187-199	1460	2190

x Choose appropriate isolator model: BB, BE, BH using mounting style diagrams on left.

## FEATURES

- \* Large diameter laterally stable springs
- \* Weld-free construction
- \* Anti-skid elastomeric acoustical cup
- \* Built-in leveling device
- \* High deflection, low natural frequency
- \* Spring elements color-coded for easy field verification

## NOTES

1. Isolators have a min. operating Kx/Ky ratio of 1.0
2. Springs have 50% additional travel to solid beyond rated load.
3. Isolators should be selected in the range of -30% to +25 % of rated load.
4. Consult spring chart for isolator performance data.

Notes / Remarks :

Project :  
Client :  
Consultant :  
Representative :

Title :

**BB / BE**  
**Free-standing Spring Mount**  
**Rubber Cup Construction**  
**(3" deflection)**

Drawing no. **S-2025.21**  
  
Rev. **1**