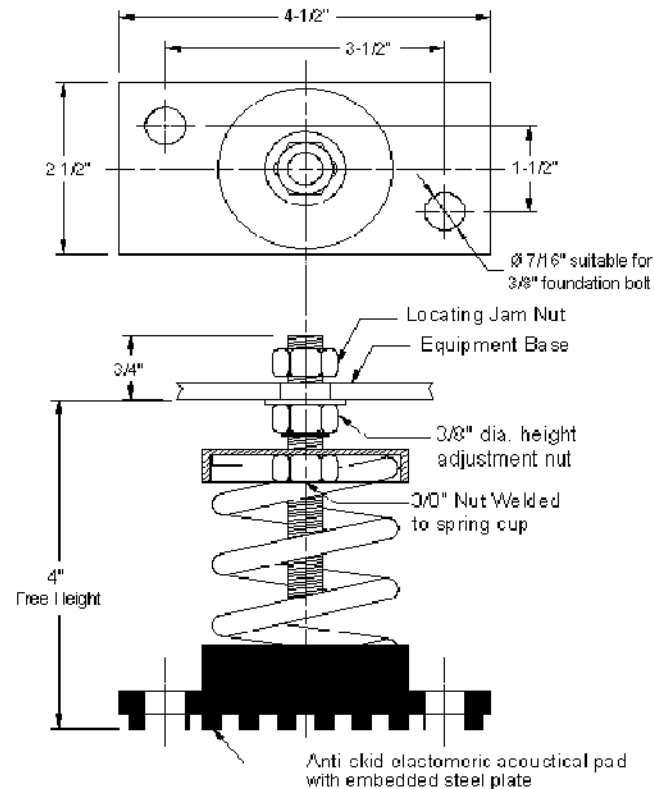
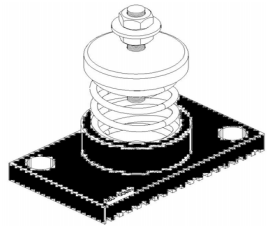


# VIBRATION MANAGEMENT CORPORATION

5930 THOMAS ROAD , HOUSTON , TEXAS 77041 , U.S.A

INTERNET ADDRESS: [www.vimco.biz](http://www.vimco.biz)



N.T.S

ISOLATOR MODEL	RATED LOAD (lbs)	SOLID LOAD (lbs)
BK-121	40	60
BK-122	66	100
BK-123	110	165
BK-124	173	260
BK-125	246	370
BK-126	300	450
BK-127	560	840

## FEATURES

- \* Large diameter laterally stable springs
- \* Weld-free construction
- \* Anti-skid elastomeric acoustical base plate
- \* Built-in leveling device
- \* Mounting holes furnished as standard
- \* Spring elements color-coded for easy field verification

## NOTES

1. Springs have 50% additional travel to solid beyond rated load.
2. Isolators should be selected in the range of -30% to +25% of rated load.
3. Consult spring chart for isolator performance data.

Notes / Remarks :

Project :

Client :

Consultant :

Representative :

Title :

**BK**  
**Free-standing Spring Mount**  
**Rubber Base Plate Construction**  
**(1" deflection)**

Drawing no.

**S-2030.01**

Rev. 0