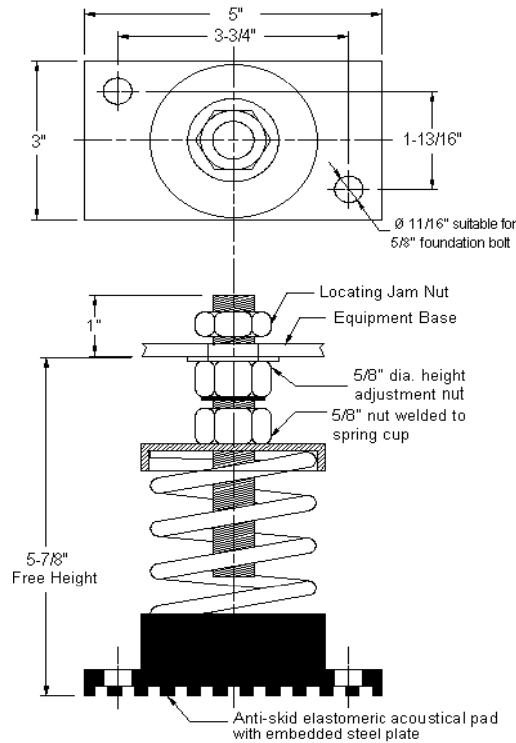
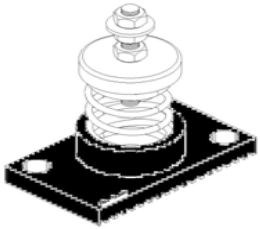


# VIBRATION MANAGEMENT CORPORATION

5930 THOMAS ROAD , HOUSTON , TEXAS 77041 , U.S.A

INTERNET ADDRESS: [www.vimco.biz](http://www.vimco.biz)



N.T.S

## NOTES

1. Springs have 50% additional travel to solid beyond rated load.
2. Isolators should be selected in the range of -30% to +25% of rated load.
3. Consult spring chart for isolator performance data.

ISOLATOR MODEL	RATED LOAD (lbs)	SOLID LOAD (lbs)
BL-150	83	125
BL-151	150	225
BL-152	216	325
BL-153	300	450
BL-154	400	600
BL-155	500	750
BL-156	600	900
BL-157	733	1100
BL-158	1200	1800
BL-159	1666	2500
BL-150-161	481	722
BL-151-161	532	799
BL-152-161	597	896
BL-153-161	666	1000
BL-154-161	750	1125
BL-155-161	871	1307
BL-156-161	1016	1525
BL-157-161	1108	1663
BL-158-161	1616	2425
BL-159-161	2083	3125

\* Mounting holes furnished as standard

## FEATURES

- \* Large diameter laterally stable springs
- \* Weld-free construction
- \* Anti-skid elastomeric acoustical base plate
- \* Built-in leveling device
- \* Mounting holes furnished as standard
- \* Spring elements color-coded for easy field verification

Notes / Remarks :

Project :  
Client :  
Consultant :  
Representative :

Title :

**BL**  
Free-standing Spring Mount  
Rubber Base Plate Construction  
(1" deflection)

Drawing no. **S-2030.03**  
Rev. 1