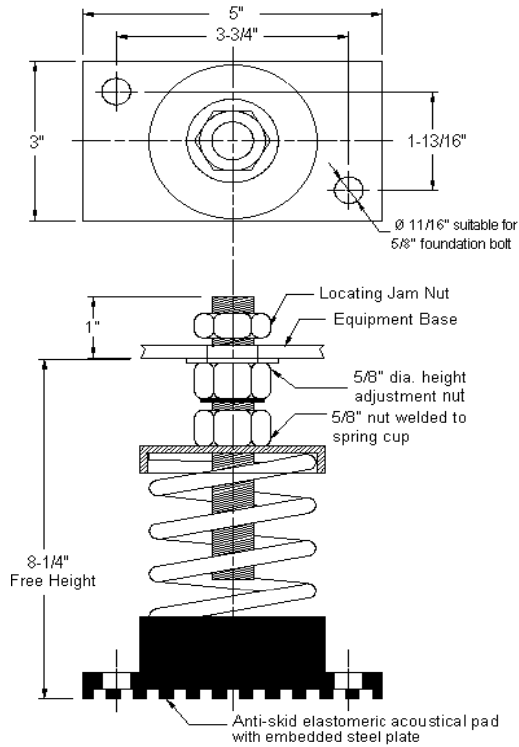
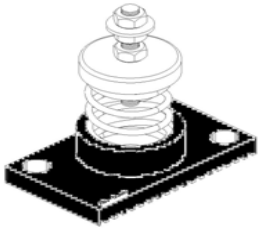


# VIBRATION MANAGEMENT CORPORATION

5930 THOMAS ROAD , HOUSTON , TEXAS 77041 , U.S.A

INTERNET ADDRESS: [www.vimco.biz](http://www.vimco.biz)



N.T.S

## NOTES

1. Springs have 50% additional travel to solid beyond rated load.
2. Isolators should be selected in the range of -30% to +25% of rated load.
3. Consult spring chart for isolator performance data.

ISOLATOR MODEL	RATED LOAD (lbs)	SOLID LOAD (lbs)
BL-181	86	130
BL-182	133	200
BL-183	180	270
BL-184	266	400
BL-185	486	730
BL-186	713	1070
BL-187	926	1390
BL-181-199	593	890
BL-182-199	633	950
BL-183-199	683	1025
BL-184-199	783	1175
BL-185-199	933	1400
BL-186-199	1233	1850
BL-187-199	1460	2190

## FEATURES

- \* Large diameter laterally stable springs
- \* Weld-free construction
- \* Anti-skid elastomeric acoustical base plate
- \* Built-in leveling device
- \* Mounting holes furnished as standard
- \* High deflection, low natural frequency
- \* Spring elements color-coded for easy field verification

Notes / Remarks :

Project :

Client :

Consultant :

Representative :

Title :

**BL**  
Free-standing Spring Mount  
Rubber Base Plate Construction  
(3" deflection)

Drawing no.

**S-2030.21**

Rev. 1