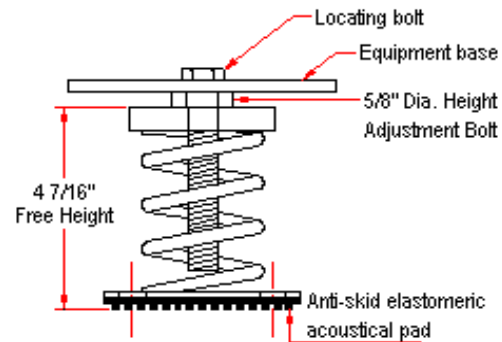
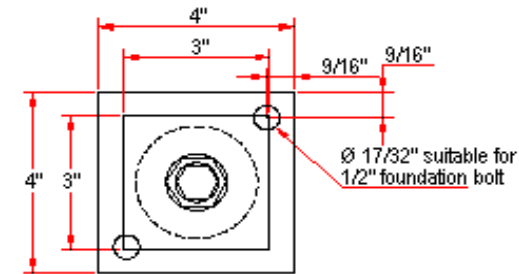
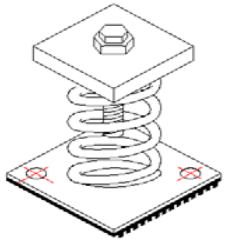


VIBRATION MANAGEMENT CORPORATION

5930 THOMAS ROAD , HOUSTON , TEXAS 77041 , U.S.A

INTERNET ADDRESS: www.vimco.biz



N.T.S.

ISOLATOR MODEL	RATED LOAD (lbs)	SOLID LOAD (lbs)
OSM-1-150	83	125
OSM-1-151	150	225
OSM-1-152	216	325
OSM-1-153	300	450
OSM-1-154	400	600
OSM-1-155	500	750
OSM-1-156	600	900
OSM-1-157	733	1100
OSM-1-158	1200	1800
OSM-1-159	1666	2500
OSM-1-150-161	481	722
OSM-1-151-161	532	799
OSM-1-152-161	597	896
OSM-1-153-161	666	1000
OSM-1-154-161	750	1125
OSM-1-155-161	871	1307
OSM-1-156-161	1016	1525
OSM-1-157-161	1108	1663
OSM-1-158-161	1616	2425
OSM-1-159-161	2083	3125

NOTES

1. Isolators have a min. operating Kx/Ky ratio of 1.0
2. Springs have 50% additional travel to solid beyond rated load.
3. Isolators should be selected in the range of -30% to +25% of rated load.
4. Consult spring chart for isolator performance data.

FEATURES

- * Large diameter laterally stable springs
- * Welded construction
- * Anti-skid elastomeric acoustical pad
- * Built-in leveling device
- * Mounting holes furnished as standard
- * Galvanized finish
- * Spring elements color-coded for easy field verification

Notes / Remarks :

Project :
Client :
Consultant :
Representative :

Title :

OSM-1
Free-standing Spring Mount
Welded Construction
(1" deflection)

Drawing no. **S-2050.01**
Rev. **2**