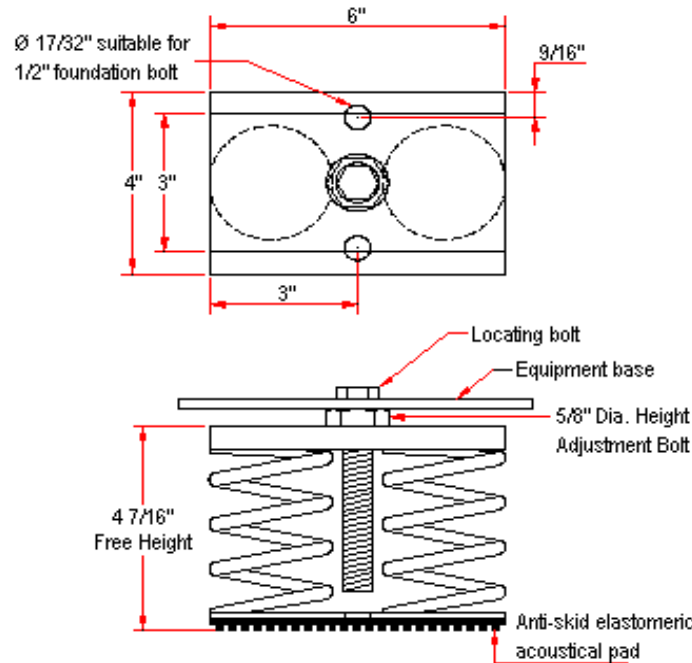
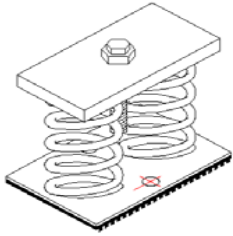


# VIBRATION MANAGEMENT CORPORATION

5930 THOMAS ROAD , HOUSTON , TEXAS 77041 , U.S.A

INTERNET ADDRESS: [www.vimco.biz](http://www.vimco.biz)



N.T.S.

ISOLATOR MODEL	RATED LOAD (lbs)	SOLID LOAD (lbs)
OSM-2-150	166	250
OSM-2-151	300	450
OSM-2-152	432	650
OSM-2-153	600	900
OSM-2-154	800	1200
OSM-2-155	1000	1500
OSM-2-156	1200	1800
OSM-2-157	1466	2200
OSM-2-158	2400	3600
OSM-2-159	3332	5000
OSM-2-150-161	962	1444
OSM-2-151-161	1064	1598
OSM-2-152-161	1194	1792
OSM-2-153-161	1332	2000
OSM-2-154-161	1500	2250
OSM-2-155-161	1742	2614
OSM-2-156-161	2032	3050
OSM-2-157-161	2216	3326
OSM-2-158-161	3232	4850
OSM-2-159-161	4166	6250

## NOTES

1. Isolators have a min. operating Kx/Ky ratio of 1.0
2. Springs have 50% additional travel to solid beyond rated load.
3. Isolators should be selected in the range of -30% to +25% of rated load.
4. Consult spring chart for isolator performance data.

## FEATURES

- \* Large diameter laterally stable springs
- \* Welded construction
- \* Anti-skid elastomeric acoustical pad
- \* Built-in leveling device
- \* Mounting holes furnished as standard
- \* Galvanized finish
- \* Spring elements color-coded for easy field verification

Notes / Remarks :

Project :  
Client :  
Consultant :  
Representative :

Title :

**OSM-2**  
Free-standing Spring Mount  
Welded Construction  
(1" deflection)

Drawing no.

**S-2050.02**

Rev. 2