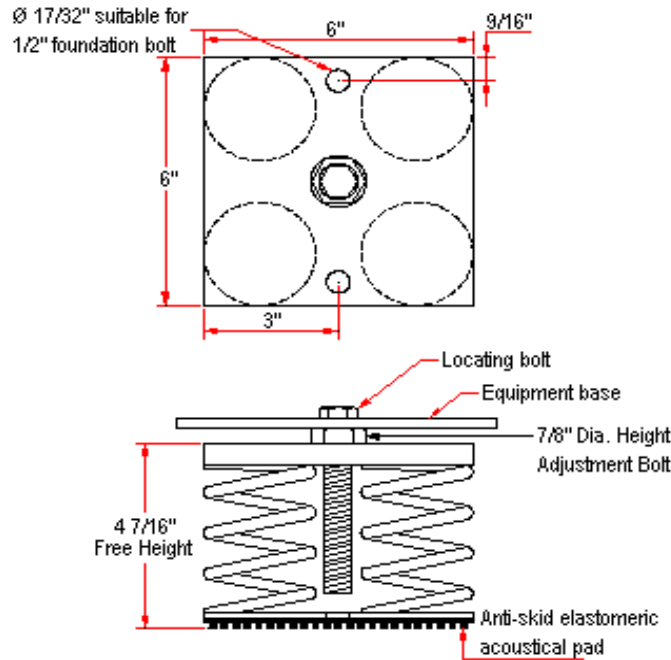
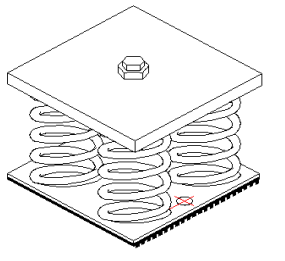


# VIBRATION MANAGEMENT CORPORATION

3532-A EAST TC JESTER , BROOKWOOD BUSINESS PARK , HOUSTON , TEXAS 77018 , U.S.A

INTERNET ADDRESS: [www.vimco.biz](http://www.vimco.biz)



N.T.S.

ISOLATOR MODEL	RATED LOAD (lbs)	SOLID LOAD (lbs)
OSM-4-150	332	500
OSM-4-151	600	900
OSM-4-152	864	1300
OSM-4-153	1200	1800
OSM-4-154	1600	2400
OSM-4-155	2000	3000
OSM-4-156	2400	3600
OSM-4-157	2932	4400
OSM-4-158	4800	7200
OSM-4-159	6664	10000
OSM-4-150-161	1924	2888
OSM-4-151-161	2128	3196
OSM-4-152-161	2388	3584
OSM-4-153-161	2664	4000
OSM-4-154-161	3000	4500
OSM-4-155-161	3484	5228
OSM-4-156-161	4064	6100
OSM-4-157-161	4432	6652
OSM-4-158-161	6464	9700
OSM-4-159-161	8332	12500

## NOTES

1. Isolators have a min. operating Kx/Ky ratio of 1.0
2. Springs have 50% additional travel to solid beyond rated load.
3. Isolators should be selected in the range of -30% to +25% of rated load.
4. Consult spring chart for isolator performance data.

## FEATURES

- \* Large diameter laterally stable springs
- \* Welded construction
- \* Anti-skid elastomeric acoustical pad
- \* Built-in leveling device
- \* Mounting holes furnished as standard
- \* Hot dip galvanized finish
- \* Spring elements color-coded for easy field verification

Notes / Remarks :

Project :  
Client :  
Consultant :  
Representative :

Title :

**OSM-4**  
**Free-standing Spring Mount**  
**Welded Construction**  
**(1" deflection)**

Drawing no.

**S-2050.03**

Rev. 1