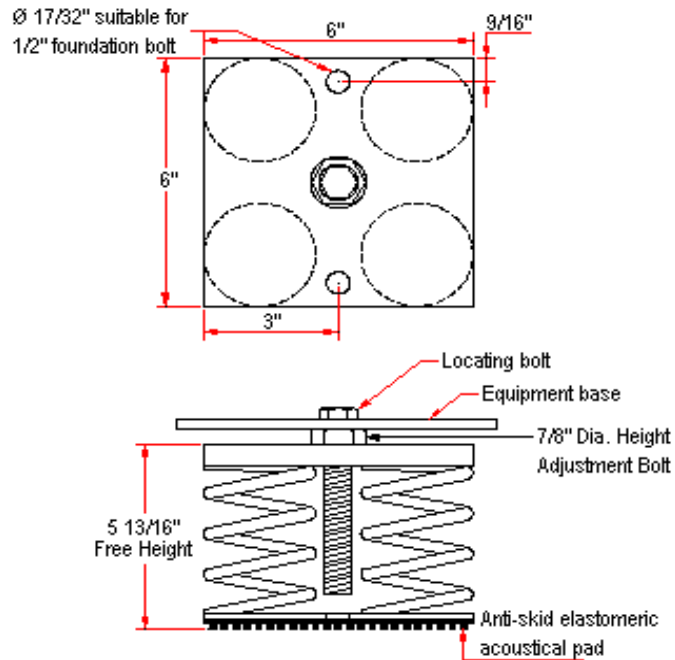
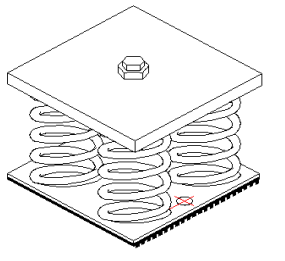


VIBRATION MANAGEMENT CORPORATION

3532-A EAST TC JESTER , BROOKWOOD BUSINESS PARK , HOUSTON , TEXAS 77018 , U.S.A

INTERNET ADDRESS: www.vimco.biz



N.T.S.

NOTES

1. Isolators have a min. operating Kx/Ky ratio of 1.0
2. Springs have 50% additional travel to solid beyond rated load.
3. Isolators should be selected in the range of -30% to +25% of rated load.
4. Consult spring chart for isolator performance data.

ISOLATOR MODEL	RATED LOAD (lbs)	SOLID LOAD (lbs)
OSM-4-140	264	400
OSM-4-141	532	800
OSM-4-142	1000	1500
OSM-4-143	1332	2000
OSM-4-144	1904	2856
OSM-4-147	3812	5720
OSM-4-148A	5044	7568
OSM-4-140-146B	1840	2760
OSM-4-141-146B	2072	3112
OSM-4-142-146B	2600	3904
OSM-4-143-146B	2932	4400
OSM-4-144-146B	3504	5256
OSM-4-147-146B	5412	8120
OSM-4-148A-146B	6644	9968

FEATURES

- * Welded construction
- * Anti-skid elastomeric acoustical pad
- * Built-in leveling device
- * Mounting holes furnished as standard
- * Hot dip galvanized finish
- * High deflection, low natural frequency
- * Spring elements color-coded for easy field verification

Notes / Remarks :

Project :
Client :
Consultant :
Representative :

Title :

OSM-4
Free-standing Spring Mount
Welded Construction
(2" deflection)

Drawing no.

S-2050.13

Rev. 1