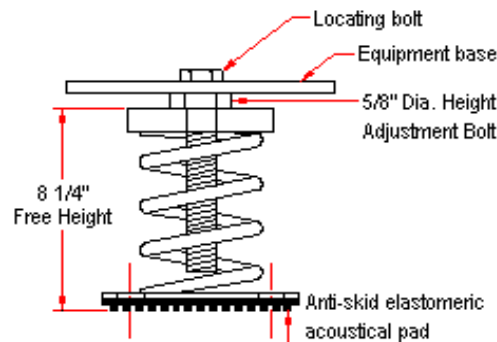
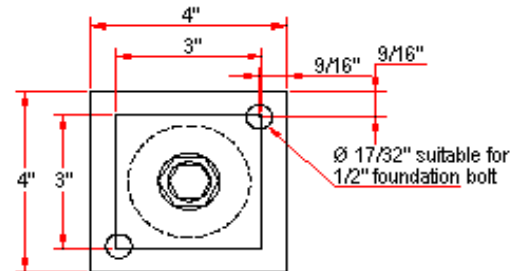
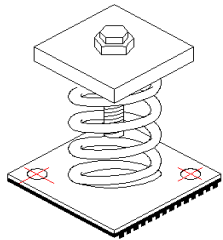


# VIBRATION MANAGEMENT CORPORATION

3532-A EAST TC JESTER , BROOKWOOD BUSINESS PARK , HOUSTON , TEXAS 77018 , U.S.A

INTERNET ADDRESS: [www.vimco.biz](http://www.vimco.biz)



N.T.S.

ISOLATOR MODEL	RATED LOAD (lbs)	SOLID LOAD (lbs)
OSM-1-181	86	130
OSM-1-182	133	200
OSM-1-183	180	270
OSM-1-184	266	400
OSM-1-185	486	730
OSM-1-186	713	1070
OSM-1-187	926	1390
OSM-1-181-199	593	890
OSM-1-182-199	633	950
OSM-1-183-199	683	1025
OSM-1-184-199	783	1175
OSM-1-185-199	933	1400
OSM-1-186-199	1233	1850
OSM-1-187-199	1460	2190

**FEATURES**

- \* Welded construction
- \* Anti-skid elastomeric acoustical pad
- \* Built-in leveling device
- \* Mounting holes furnished as standard
- \* Hot dip galvanized finish
- \* High deflection, low natural frequency
- \* Spring elements color-coded for easy field verification

**NOTES**

1. Isolators have a min. operating Kx/Ky ratio of 1.0
2. Springs have 50% additional travel to solid beyond rated load.
3. Isolators should be selected in the range of -30% to +25% of rated load.
4. Consult spring chart for isolator performance data.

Notes / Remarks :	Project :	<b>OSM-1</b> Free-standing Spring Mount Welded Construction (3" deflection)	Drawing no. <b>S-2050.21</b>  Rev. <b>0</b>
	Client :		
	Consultant :		
	Representative :		