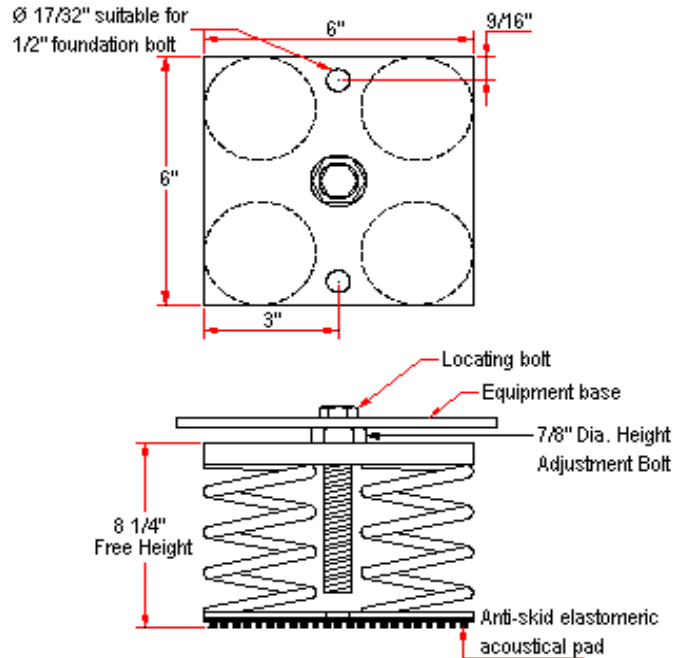
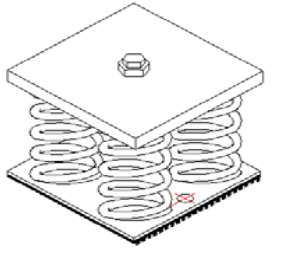


VIBRATION MANAGEMENT CORPORATION

5930 THOMAS ROAD , HOUSTON , TEXAS 77041 , U.S.A

INTERNET ADDRESS: www.vimco.biz



N.T.S.

ISOLATOR MODEL	RATED LOAD (lbs)	SOLID LOAD (lbs)
OSM-4-181	344	520
OSM-4-182	532	800
OSM-4-183	720	1080
OSM-4-184	1064	1600
OSM-4-185	1944	2920
OSM-4-186	2852	4280
OSM-4-187	3704	5560
OSM-4-181-199	2372	3560
OSM-4-182-199	2532	3800
OSM-4-183-199	2732	4100
OSM-4-184-199	3132	4700
OSM-4-185-199	3732	5600
OSM-4-186-199	4932	7400
OSM-4-187-199	5840	8760

FEATURES

- * Welded construction
- * Anti-skid elastomeric acoustical pad
- * Built-in leveling device
- * Mounting holes furnished as standard
- * Galvanized finish
- * High deflection, low natural frequency
- * Spring elements color-coded for easy field verification

NOTES

1. Isolators have a min. operating Kx/Ky ratio of 1.0
2. Springs have 50% additional travel to solid beyond rated load.
3. Isolators should be selected in the range of -30% to +25% of rated load.
4. Consult spring chart for isolator performance data.

Notes / Remarks :

Project :
 Client :
 Consultant :
 Representative :

Title :

OSM-4
 Free-standing Spring Mount
 Welded Construction
 (3" deflection)

Drawing no. **S-2050.23**

 Rev. 1