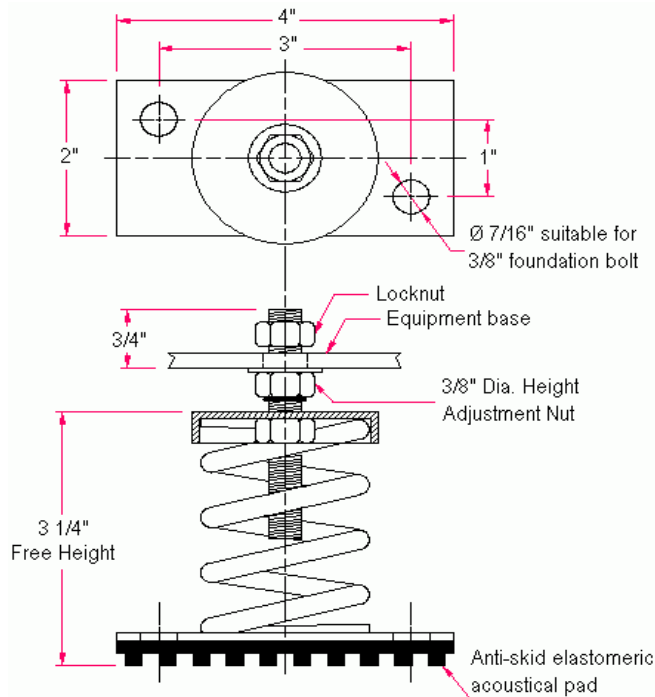
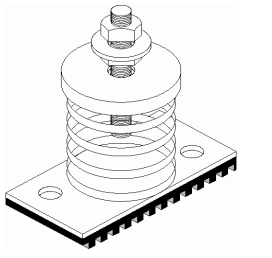


VIBRATION MANAGEMENT CORPORATION

5930 THOMAS ROAD , HOUSTON , TEXAS 77041 , U.S.A

INTERNET ADDRESS: www.vimco.biz



ISOLATOR MODEL	RATED LOAD (lbs)	SOLID LOAD (lbs)
OSM-1A-121	40	60
OSM-1A-122	66	100
OSM-1A-123	110	165
OSM-1A-124	173	260
OSM-1A-125	246	370
OSM-1A-126	300	450
OSM-1A-127	560	840

FEATURES

- * Large diameter laterally stable springs
- * Welded construction
- * Anti-skid elastomeric acoustical pad
- * Built-in leveling device
- * Mounting holes furnished as standard
- * Galvanized finish
- * Spring elements color-coded for easy field verification

NOTES

1. Isolators have a min. operating K_x/K_y ratio of 1.0
2. Springs have 50% additional travel to solid beyond rated load.
3. Isolators should be selected in the range of -30% to +25% of rated load.
4. Consult spring chart for isolator performance data.

Notes / Remarks :

Project :
Client :
Consultant :
Representative :

Title :

OSM-1A
Free-standing Spring Mount
Welded Construction
(1" deflection)

Drawing no.

S-2055.01

Rev. 2