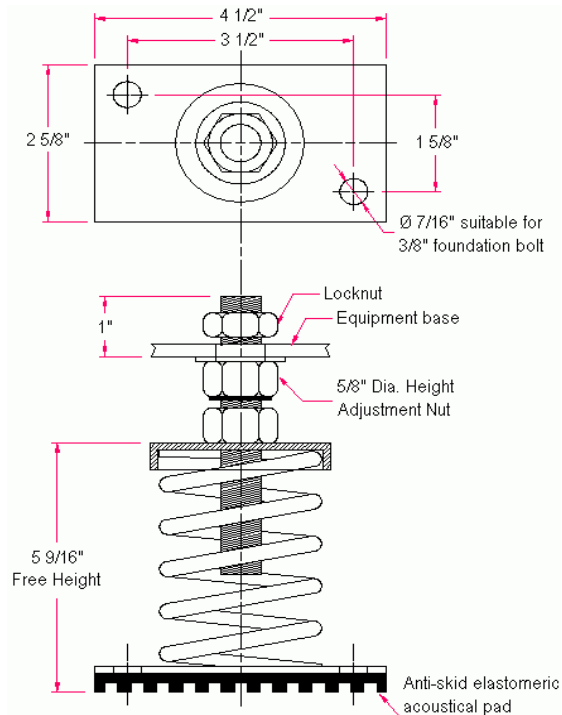
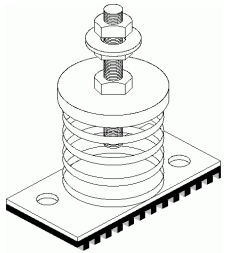


VIBRATION MANAGEMENT CORPORATION

3532-A EAST TC JESTER , BROOKWOOD BUSINESS PARK , HOUSTON , TEXAS 77018 , U.S.A

INTERNET ADDRESS: www.vimco.biz



N.T.S.

ISOLATOR MODEL	RATED LOAD (lbs)	SOLID LOAD (lbs)
OSM-1C-140	66	100
OSM-1C-141	133	200
OSM-1C-142	250	375
OSM-1C-143	333	500
OSM-1C-144	476	714
OSM-1C-147	953	1430
OSM-1C-148A	1261	1892
OSM-1C-140-146B	460	690
OSM-1C-141-146B	518	778
OSM-1C-142-146B	650	976
OSM-1C-143-146B	733	1100
OSM-1C-144-146B	876	1314
OSM-1C-147-146B	1353	2030
OSM-1C-148A-146B	1661	2492

FEATURES

- * Welded construction
- * Anti-skid elastomeric acoustical pad
- * Built-in leveling device
- * Mounting holes furnished as standard
- * Hot dip galvanized finish
- * High deflection, low natural frequency
- * Spring elements color-coded for easy field verification

NOTES

1. Isolators have a min. operating Kx/Ky ratio of 1.0
2. Springs have 50% additional travel to solid beyond rated load.
3. Isolators should be selected in the range of -30% to +25% of rated load.
4. Consult spring chart for isolator performance data.

Notes / Remarks :

Project :
Client :
Consultant :
Representative :

Title :

OSM-1C
Free-standing Spring Mount
Welded Construction
(2" deflection)

Drawing no. **S-2055.11**
Rev. **0**