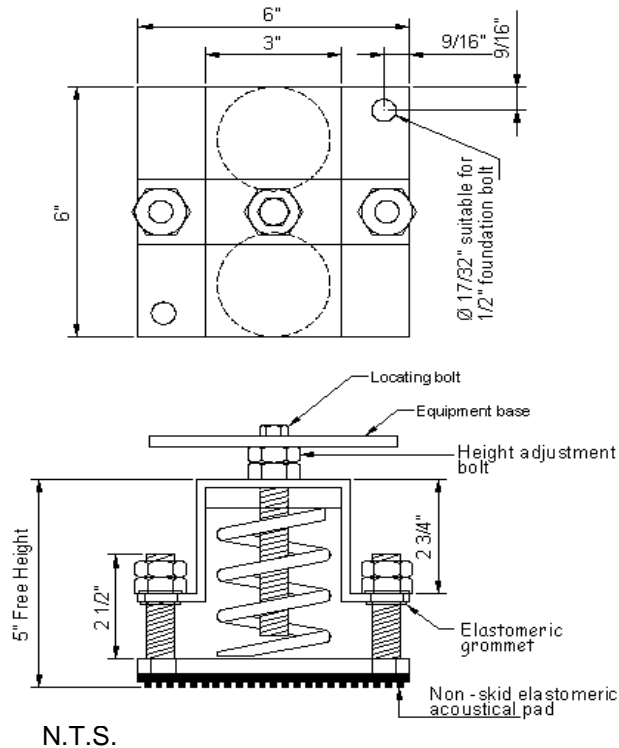
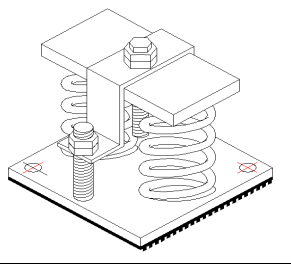


# VIBRATION MANAGEMENT CORPORATION

3532-A EAST TC JESTER , BROOKWOOD BUSINESS PARK , HOUSTON , TEXAS 77018 , U.S.A

INTERNET ADDRESS: [www.vimco.biz](http://www.vimco.biz)



ISOLATOR MODEL	RATED LOAD (lbs)	SOLID LOAD (lbs)
RSM-2-150	166	250
RSM-2-151	300	450
RSM-2-152	432	650
RSM-2-153	600	900
RSM-2-154	800	1200
RSM-2-155	1000	1500
RSM-2-156	1200	1800
RSM-2-157	1466	2200
RSM-2-158	2400	3600
RSM-2-159	3332	5000
RSM-2-150-161	962	1444
RSM-2-151-161	1064	1598
RSM-2-152-161	1194	1792
RSM-2-153-161	1332	2000
RSM-2-154-161	1500	2250
RSM-2-155-161	1742	2614
RSM-2-156-161	2032	3050
RSM-2-157-161	2216	3326
RSM-2-158-161	3232	4850
RSM-2-159-161	4166	6250

## NOTES

1. Isolators have a min. operating  $K_x/K_y$  ratio of 1.0
2. Springs have 50% additional travel to solid beyond rated load.
3. Isolators should be selected in the range of -30% to +25% of rated load.
4. Adjust RESTRICTO™ assembly vertical limiting nuts as per clearance levels specified by project engineer. (standard: 1/4" maximum: 1/2")
5. Consult spring chart for isolator performance data.

## FEATURES

- \* RESTRICTO™ assembly limits vertical movement due to reduced loads or external forces (wind loads)
- \* Large diameter laterally stable springs
- \* Welded construction
- \* Anti-skid elastomeric acoustical pad
- \* Built-in leveling device
- \* Mounting holes furnished as standard
- \* Elastomeric 'non-shortcircuiting' grommets
- \* Galvanized finish
- \* Spring elements color-coded for easy field verification

Notes / Remarks :	Project :	Title : <b>RSM-2</b> Restrained Spring Mount (1" deflection)	Drawing no. <b>S-2075.02</b>
	Client :		
	Consultant :		
	Representative :		
			Rev. 3