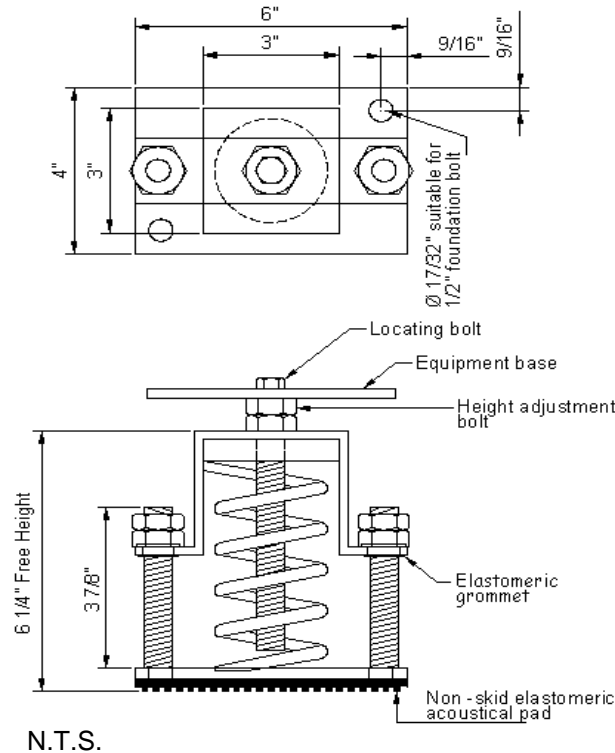
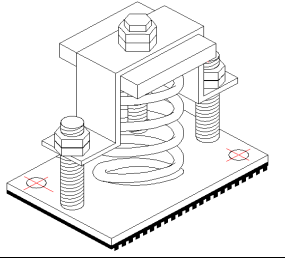


VIBRATION MANAGEMENT CORPORATION

3532-A EAST TC JESTER , BROOKWOOD BUSINESS PARK , HOUSTON , TEXAS 77018 , U.S.A

INTERNET ADDRESS: www.vimco.biz



NOTES

1. Isolators have a min. operating K_x/K_y ratio of 1.0
2. Springs have 50% additional travel to solid beyond rated load.
3. Isolators should be selected in the range of -30% to +25% of rated load.
4. Adjust RESTRICTO™ assembly vertical limiting nuts as per clearance levels specified by project engineer. (standard: 1/4" maximum: 1/2")
5. Consult spring chart for isolator performance data.

ISOLATOR MODEL	RATED LOAD (lbs)	SOLID LOAD (lbs)
RSM-1-140	66	100
RSM-1-141	133	200
RSM-1-142	250	375
RSM-1-143	333	500
RSM-1-144	476	714
RSM-1-147	953	1430
RSM-1-148A	1261	1892
RSM-1-140-146B	460	690
RSM-1-141-146B	518	778
RSM-1-142-146B	650	976
RSM-1-143-146B	733	1100
RSM-1-144-146B	876	1314
RSM-1-147-146B	1353	2030
RSM-1-148A-146B	1661	2492

FEATURES

- * RESTRICTO™ assembly limits vertical movement due to reduced loads or external forces (wind loads)
- * Welded construction
- * Anti-skid elastomeric acoustical pad
- * Built-in leveling device
- * Mounting holes furnished as standard
- * Galvanized finish
- * Elastomeric 'non-shortcircuiting' grommets
- * High deflection, low natural frequency
- * Spring elements color-coded for easy field verification

Notes / Remarks :

Project :

Client :

Consultant :

Representative :

Title :

RSM-1
Restrained Spring Mount
(2" deflection)

Drawing no.

S-2075.11

Rev. 3