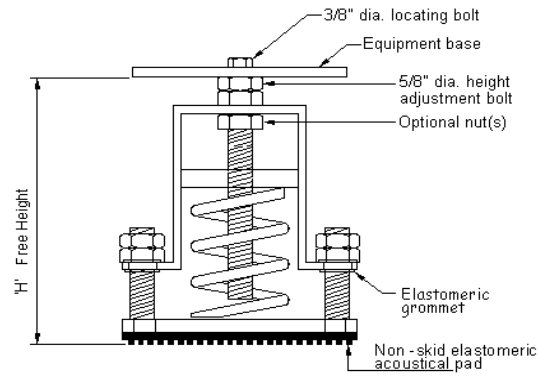
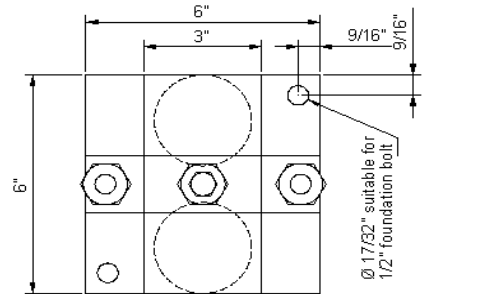
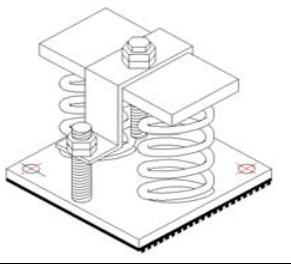


VIBRATION MANAGEMENT CORPORATION

5930 THOMAS ROAD , HOUSTON , TEXAS 77041 , U.S.A

INTERNET ADDRESS: www.vimco.biz



N.T.S.

NOTES

1. Isolators have a min. operating Kx/Ky ratio of 1.0
2. Springs have 50% additional travel to solid beyond rated load.
3. Isolators should be selected in the range of -30% to +25% of rated load.
4. Adjust RESTRICTO™ assembly vertical limiting nuts as per clearance levels specified by project engineer. (standard: 1/4" maximum: 1/2")
5. Consult spring chart for isolator performance data.

FEATURES

- * RESTRICTO™ assembly limits vertical movement due to reduced loads or external forces (wind loads)
- * Welded construction. Galvanized finish. Built-in leveling device
- * Anti-skid elastomeric acoustical pad
- * Mounting holes furnished as standard
- * Elastomeric 'non-shortcircuiting' grommets
- * High deflection, low natural frequency
- * Spring elements color-coded for easy field verification

ISOLATOR MODEL	RATED LOAD (lbs)	SOLID LOAD (lbs)	H (lbs)
RSM-2-081	64	96	7 3/8
RSM-2-082	100	152	
RSM-2-083	178	268	
RSM-2-084	316	474	
RSM-2-085	560	840	
RSM-2-086	720	1080	
RSM-2-087	970	1456	
RSM-2-140	132	200	7 3/8
RSM-2-141	266	400	
RSM-2-142	500	750	
RSM-2-143	666	1000	
RSM-2-144	952	1428	
RSM-2-147	1906	2860	
RSM-2-148A	2522	3784	
RSM-2-140-146B	920	1380	
RSM-2-141-146B	1036	1556	
RSM-2-142-146B	1300	1952	
RSM-2-143-146B	1466	2200	
RSM-2-144-146B	1752	2628	
RSM-2-147-146B	2706	4060	
RSM-2-148A-146B	3322	4984	
RSM-2-201	120	180	8 3/8
RSM-2-202	200	300	
RSM-2-203	300	450	
RSM-2-204	500	750	
RSM-2-205	800	1200	
RSM-2-206	1400	2100	
RSM-2-207	1852	2780	
RSM-2-201-219	1186	1780	
RSM-2-202-219	1266	1900	
RSM-2-203-219	1366	2050	
RSM-2-204-219	1566	2350	
RSM-2-205-219	1866	2800	
RSM-2-206-219	2466	3700	
RSM-2-207-219	2920	4380	

<u>Notes / Remarks :</u>	Project :	Title :	RSM-2
	Client :	Restrained Spring Mount	
	Consultant :	(2" deflection)	
	Representative :	Rev. 4	
			<u>Drawing no.</u> S-2075.12