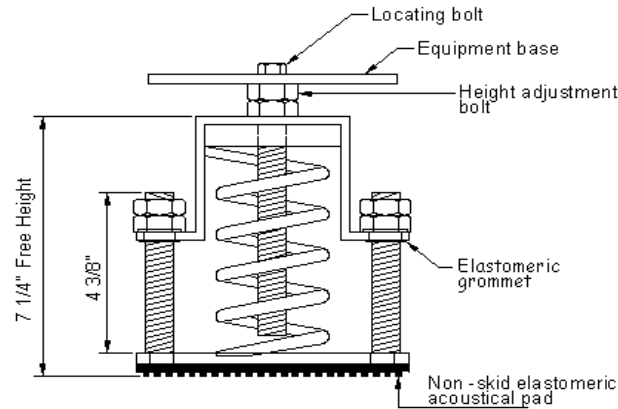
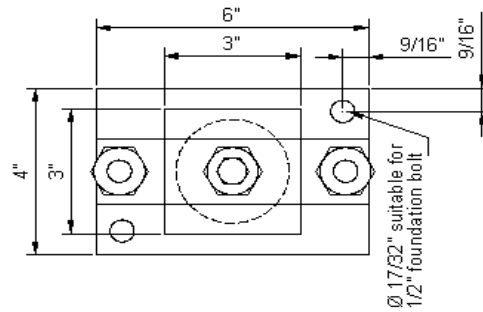
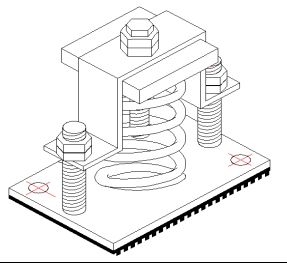


VIBRATION MANAGEMENT CORPORATION

3532-A EAST TC JESTER , BROOKWOOD BUSINESS PARK , HOUSTON , TEXAS 77018 , U.S.A

INTERNET ADDRESS: www.vimco.biz



N.T.S.

ISOLATOR MODEL	RATED LOAD (lbs)	SOLID LOAD (lbs)
RSM-1-181	86	130
RSM-1-182	133	200
RSM-1-183	180	270
RSM-1-184	266	400
RSM-1-185	486	730
RSM-1-186	713	1070
RSM-1-187	926	1390
RSM-1-181-199	593	890
RSM-1-182-199	633	950
RSM-1-183-199	683	1025
RSM-1-184-199	783	1175
RSM-1-185-199	933	1400
RSM-1-186-199	1233	1850
RSM-1-187-199	1460	2190

FEATURES

- * RESTRICTO™ assembly limits vertical movement due to reduced loads or external forces (wind loads)
- * Welded construction
- * Anti-skid elastomeric acoustical pad
- * Built-in leveling device
- * Mounting holes furnished as standard
- * Hot dip galvanized finish
- * Elastomeric 'non-shortcircuiting' grommets
- * High deflection, low natural frequency
- * Spring elements color-coded for easy field verification

NOTES

1. Isolators have a min. operating K_x/K_y ratio of 1.0
2. Springs have 50% additional travel to solid beyond rated load.
3. Isolators should be selected in the range of -30% to +25% of rated load.
4. Adjust RESTRICTO™ assembly vertical limiting nuts as per clearance levels specified by project engineer. (standard: 1/4" maximum: 1/2")
5. Consult spring chart for isolator performance data.

Notes / Remarks :

Project :

Client :

Consultant :

Representative :

Title :

RSM-1
Restrained Spring Mount
(3" deflection)

Drawing no.

S-2075.21

Rev. 0