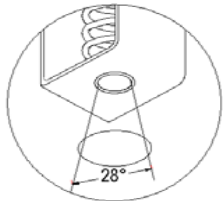
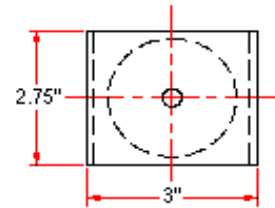
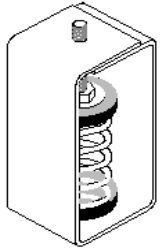


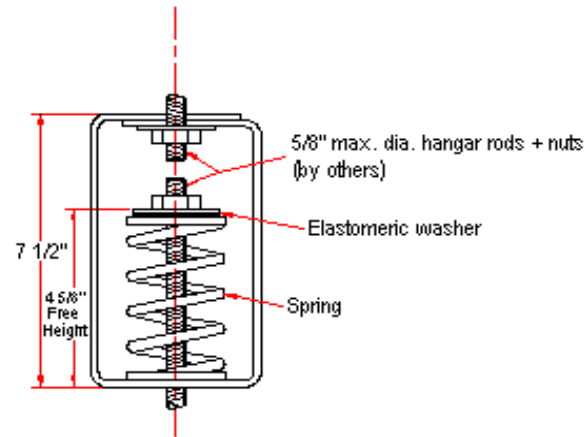
# VIBRATION MANAGEMENT CORPORATION

5930 THOMAS ROAD , HOUSTON , TEXAS 77041 , U.S.A

INTERNET ADDRESS: [www.vimco.biz](http://www.vimco.biz)



Not applicable with booster springs



N.T.S.

## NOTES

1. Springs have 50% additional travel to solid beyond rated load.
2. Isolators should be selected in the range of -30% to +25% of rated load.
3. Consult spring chart for isolator performance data.
4. Nuts, washers & rods by others.

ISOLATOR MODEL	RATED LOAD (lbs)	SOLID LOAD (lbs)
HSB-101	56	85
HSB-102	76	115
HSB-103	113	170
HSB-104	150	225
HSB-105	216	325
HSB-106	300	450
HSB-107	400	600
HSB-108	500	750
HSB-109	600	900
HSB-110	733	1100
HSB-111	866	1300
HSB-112	1000	1500
HSB-101-113	507	761
HSB-102-113	526	789
HSB-103-113	554	831
HSB-104-113	582	874
HSB-105-113	647	971
HSB-106-113	716	1075
HSB-107-113	800	1200
HSB-108-113	921	1382
HSB-109-113	1066	1600
HSB-110-113	1106	1660
HSB-111-113	1240	1860
HSB-112-113	1466	2200

## FEATURES

- \* Spring elements color-coded for easy field verification
- \* Load distribution steel washer

Notes / Remarks :

Project :  
Client :  
Consultant :  
Representative :

Title :

**HSB**  
Spring Hanger  
(1" deflection)

Drawing no.  
**S-2100.02**

Rev. 3