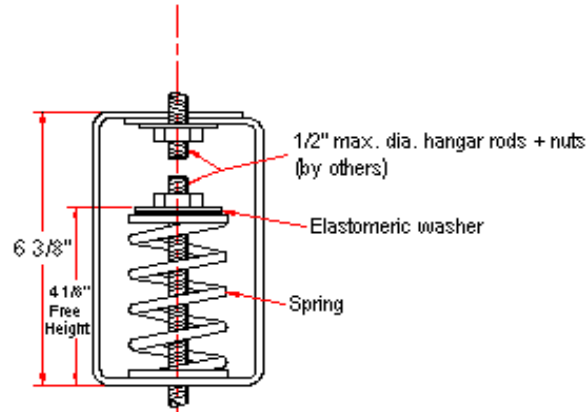
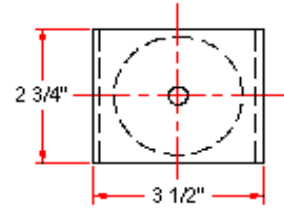
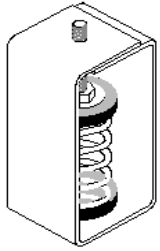


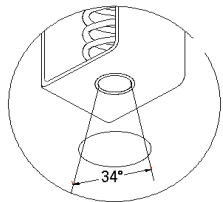
VIBRATION MANAGEMENT CORPORATION

3532-A EAST TC JESTER , BROOKWOOD BUSINESS PARK , HOUSTON , TEXAS 77018 , U.S.A

INTERNET ADDRESS: www.vimco.biz



N.T.S.



Not applicable with booster springs

ISOLATOR MODEL	RATED LOAD (lbs)	SOLID LOAD (lbs)
HSD-150	83	125
HSD-151	150	225
HSD-152	216	325
HSD-153	300	450
HSD-154	400	600
HSD-155	500	750
HSD-156	600	900
HSD-157	733	1100
HSD-158	1200	1800
HSD-159	1666	2500
HSD-150-161	481	722
HSD-151-161	532	799
HSD-152-161	597	896
HSD-153-161	666	1000
HSD-154-161	750	1125
HSD-155-161	871	1307
HSD-156-161	1016	1525
HSD-157-161	1108	1663
HSD-158-161	1616	2425
HSD-159-161	2083	3125

NOTES

1. Springs have 50% additional travel to solid beyond rated load.
2. Isolators should be selected in the range of -30% to +25% of rated load.
3. Consult spring chart for isolator performance data.
4. Nuts, washers & rods by others.
5. Contact factory for optional drilling to accept larger hanger rod sizes.

FEATURES

- * Spring elements color-coded for easy field verification
- * Load distribution steel washer

Notes / Remarks :

Project :
Client :
Consultant :
Representative :

Title :

HSD
Spring Hanger
(1" deflection)

Drawing no.
S-2100.04

Rev. 0