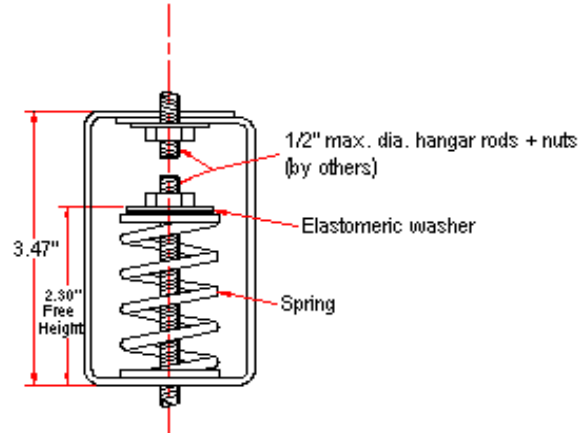
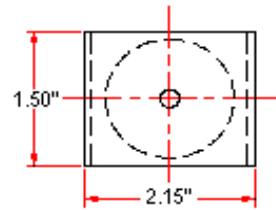
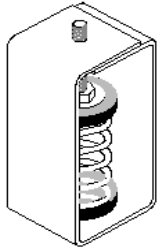


VIBRATION MANAGEMENT CORPORATION

5930 THOMAS ROAD , HOUSTON , TEXAS 77041 , U.S.A

INTERNET ADDRESS: www.vimco.biz



ISOLATOR MODEL	RATED LOAD (lbs)	SOLID LOAD (lbs)
HSF-041	15	23
HSF-042	33	50
HSF-043	57	86
HSF-044	76	115
HSF-045	148	222

FEATURES

- * Spring elements color-coded for easy field verification
- * Load distribution steel washer

NOTES

1. Springs have 50% additional travel to solid beyond rated load.
2. Isolators should be selected in the range of -30% to +25% of rated load.
3. Consult spring chart for isolator performance data.
4. Nuts, washers & rods by others.

Notes / Remarks :

Project :
Client :
Consultant :
Representative :

Title :

HSF
Spring Hanger
(1" deflection)

Drawing no.
S-2100.05

Rev. 2