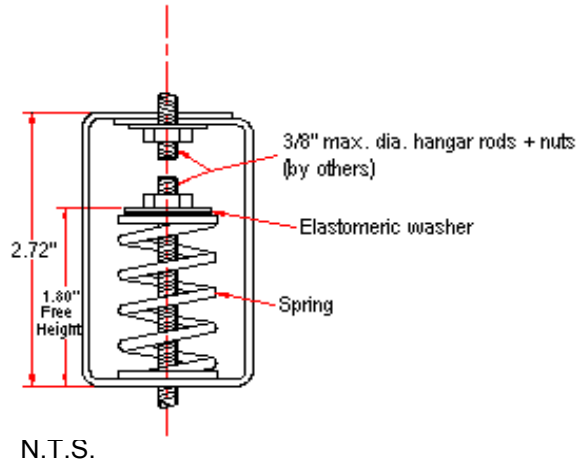
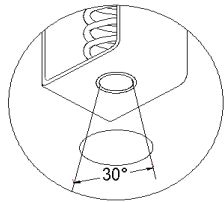
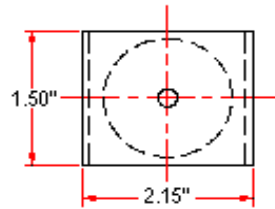
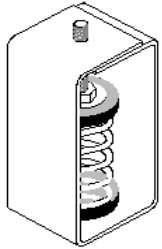


VIBRATION MANAGEMENT CORPORATION

3532-A EAST TC JESTER , BROOKWOOD BUSINESS PARK , HOUSTON , TEXAS 77018 , U.S.A

INTERNET ADDRESS: www.vimco.biz



N.T.S.

ISOLATOR MODEL	RATED LOAD (lbs)	SOLID LOAD (lbs)
HSS-021	20	30
HSS-022	44	66
HSS-023	70	105
HSS-024	100	150

FEATURES

- * Spring elements color-coded for easy field verification
- * Load distribution steel washer

NOTES

1. Springs have 50% additional travel to solid beyond rated load.
2. Isolators should be selected in the range of -30% to +25% of rated load.
3. Consult spring chart for isolator performance data.
4. Nuts, washers & rods by others.

Notes / Remarks :

Project :
Client :
Consultant :
Representative :

Title :

HSS
Spring Hanger
(0.75" deflection)

Drawing no.
S-2100.21

Rev. 1