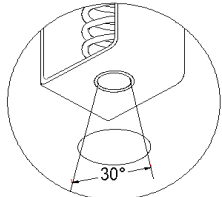
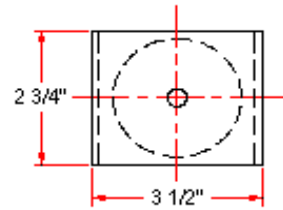
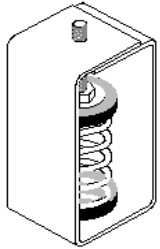


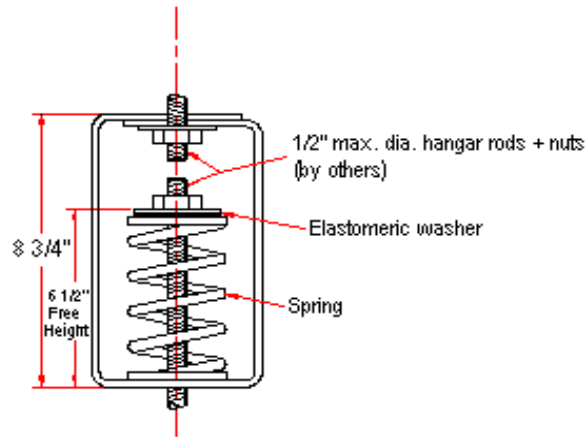
VIBRATION MANAGEMENT CORPORATION

3532-A EAST TC JESTER , BROOKWOOD BUSINESS PARK , HOUSTON , TEXAS 77018 , U.S.A

INTERNET ADDRESS: www.vimco.biz



Not applicable with booster springs



N.T.S.

ISOLATOR MODEL	RATED LOAD (lbs)	SOLID LOAD (lbs)
HSE-181	86	130
HSE-182	133	200
HSE-183	180	270
HSE-184	266	400
HSE-185	486	730
HSE-186	713	1070
HSE-187	926	1390
HSE-181-199	593	890
HSE-182-199	633	950
HSE-183-199	683	1025
HSE-184-199	783	1175
HSE-185-199	933	1400
HSE-186-199	1233	1850
HSE-187-199	1460	2190

FEATURES

- * Spring elements color-coded for easy field verification
- * High deflection, low natural frequency
- * Load distribution steel washer

NOTES

1. Springs have 50% additional travel to solid beyond rated load.
2. Isolators should be selected in the range of -30% to +25% of rated load.
3. Consult spring chart for isolator performance data.
4. Nuts, washers & rods by others.
5. Contact factory for optional drilling to accept larger hanger rod sizes.

Notes / Remarks :

Project :
Client :
Consultant :
Representative :

Title :

HSE
Spring Hanger
(3" deflection)

Drawing no.
S-2100.31

Rev. 0