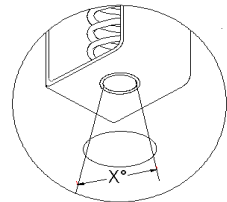
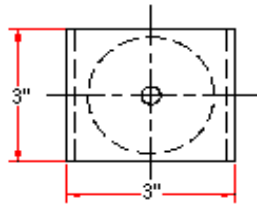


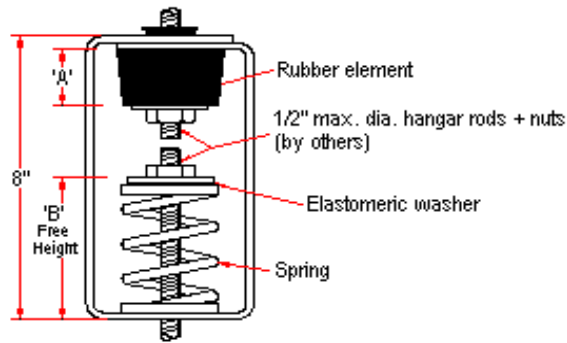
VIBRATION MANAGEMENT CORPORATION

3532-A EAST TC JESTER , BROOKWOOD BUSINESS PARK , HOUSTON , TEXAS 77018 , U.S.A

INTERNET ADDRESS: www.vimco.biz



X=46° for springs 121 to 127
X=28° for springs 101 to 107



N.T.S.

ISOLATOR MODEL	RATED LOAD (lbs)	SOLID LOAD (lbs)	'A' (inches)	'B' inches
HNSA-A3-121	40	60	1 1/4	3 3/8
HNSA-A4-122	66	100	1 1/4	3 3/8
HNSA-B1-123	110	165	1 3/4	3 3/8
HNSA-B2-124	173	260	1 3/4	3 3/8
HNSA-B3-125	246	370	1 3/4	3 3/8
HNSA-B3-126	300	450	1 3/4	3 3/8
HNSA-B4-127	466	700	1 3/4	3 3/8
HNSA-A3-101	56	85	1 1/4	4 5/8
HNSA-A4-102	76	115	1 1/4	4 5/8
HNSA-B1-103	113	170	1 3/4	4 5/8
HNSA-B2-104	150	225	1 3/4	4 5/8
HNSA-B3-105	216	325	1 3/4	4 5/8
HNSA-B3-106	300	450	1 3/4	4 5/8
HNSA-B3-107	400	600	1 3/4	4 5/8

FEATURES

- * Load distribution steel washer
- * Embedded steel plates in rubber element for uniform loading.
- * Oil + water resistant rubber element
- * Spring / Rubber elements color-coded for easy field verification
(Rubber element color coding can be by 'dot' or 'complete element')
- * Rubber element incorporates projected collar to prevent metal to metal contact between rod and bracket.

NOTES

1. Springs have 50% additional travel to solid beyond rated load.
2. Isolators should be selected in the range of -30% to +25% of rated load.
3. Consult spring chart for isolator performance data.
4. Nuts, washer & rods by others.

Notes / Remarks :

Project :
Client :
Consultant :
Representative :

Title :

HNSA
Neo-Spring™ Hanger
(1" deflection)

Drawing no.
S-2400.01

Rev. 0