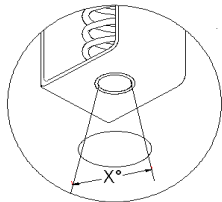
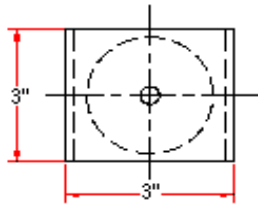
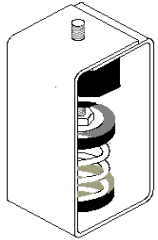


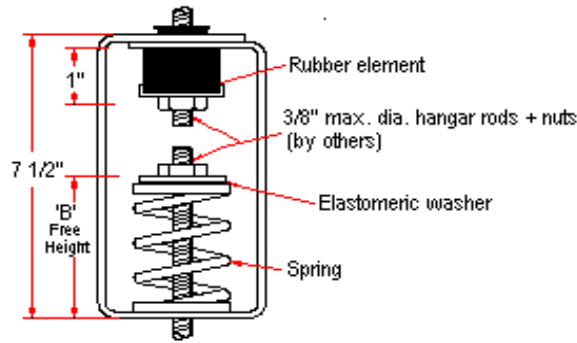
VIBRATION MANAGEMENT CORPORATION

3532-A EAST TC JESTER , BROOKWOOD BUSINESS PARK , HOUSTON , TEXAS 77018 , U.S.A

INTERNET ADDRESS: www.vimco.biz



X=46° for springs 121 to 127
X=28° for springs 101 to 112



N.T.S.

| ISOLATOR MODEL | RATED LOAD (lbs) | SOLID LOAD (lbs) | 'B' inches |
|----------------|------------------|------------------|------------|
| HSB-HM-121 | 40 | 60 | 3 3/8 |
| HSB-HM-122 | 66 | 100 | 3 3/8 |
| HSB-HM-123 | 110 | 165 | 3 3/8 |
| HSB-HM-124 | 173 | 260 | 3 3/8 |
| HSB-HM-125 | 246 | 370 | 3 3/8 |
| HSB-HM-126 | 300 | 450 | 3 3/8 |
| HSB-HM-127 | 560 | 840 | 3 3/8 |
| HSB-HM-101 | 56 | 85 | 4 5/8 |
| HSB-HM-102 | 76 | 115 | 4 5/8 |
| HSB-HM-103 | 113 | 170 | 4 5/8 |
| HSB-HM-104 | 150 | 225 | 4 5/8 |
| HSB-HM-105 | 216 | 325 | 4 5/8 |
| HSB-HM-106 | 300 | 450 | 4 5/8 |
| HSB-HM-107 | 400 | 600 | 4 5/8 |
| HSB-HM-108 | 500 | 750 | 4 5/8 |
| HSB-HM-109 | 600 | 900 | 4 5/8 |
| HSB-HM-110 | 733 | 1100 | 4 5/8 |
| HSB-HM-111 | 866 | 1300 | 4 5/8 |
| HSB-HM-112 | 1000 | 1500 | 4 5/8 |

NOTES

1. Springs have 50% additional travel to solid beyond rated load.
2. Isolators should be selected in the range of -30% to +25% of rated load.
3. Consult spring chart for isolator performance data.

FEATURES

- * Oil + water resistant rubber element
- * Rubber element incorporates projected collar to prevent metal to metal contact between rod and bracket.

Notes / Remarks :

Project :
Client :
Consultant :
Representative :

Title :

HSB-HM
Neo-Spring™ Hanger
(1" deflection)

Drawing no.
S-2400.06

Rev. 2