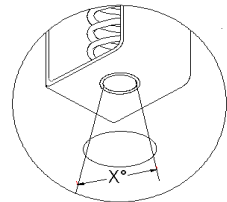
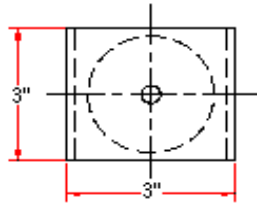
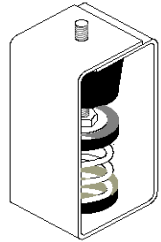


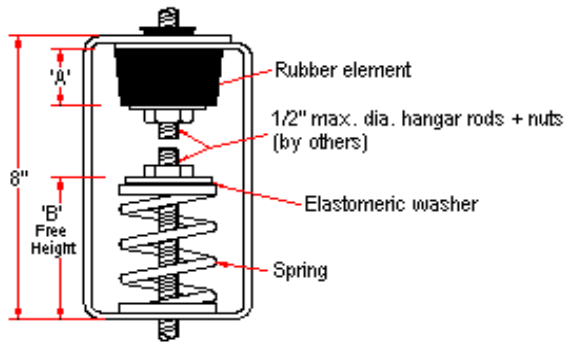
# VIBRATION MANAGEMENT CORPORATION

3532-A EAST TC JESTER , BROOKWOOD BUSINESS PARK , HOUSTON , TEXAS 77018 , U.S.A

INTERNET ADDRESS: [www.vimco.biz](http://www.vimco.biz)



X=46° for springs 121 to 127  
X=28° for springs 101 to 107



N.T.S.

ISOLATOR MODEL	RATED LOAD (lbs)	SOLID LOAD (lbs)	'A' (inches)	'B' inches
HNSSA-A1-121	40	60	15/16	3 3/8
HNSSA-A1-122	66	100	15/16	3 3/8
HNSSA-A1-123	110	165	15/16	3 3/8
HNSSA-A1-124	173	260	15/16	3 3/8
HNSSA-A2-125	246	370	15/16	3 3/8
HNSSA-A2-126	300	450	15/16	3 3/8
HNSSA-A2-127	466	700	15/16	3 3/8
HNSSA-A1-101	56	85	15/16	4 5/8
HNSSA-A1-102	76	115	15/16	4 5/8
HNSSA-A1-103	113	170	15/16	4 5/8
HNSSA-A1-104	150	225	15/16	4 5/8
HNSSA-A2-105	216	325	15/16	4 5/8
HNSSA-A2-106	300	450	15/16	4 5/8
HNSSA-A2-107	400	600	15/16	4 5/8

### FEATURES

- \* Load distribution steel washer
- \* Embedded steel plates in rubber element for uniform loading.
- \* Oil + water resistant rubber element
- \* Spring / Rubber elements color-coded for easy field verification  
*(Rubber element color coding can be by 'dot' or 'complete element')*
- \* Rubber element incorporates projected collar to prevent metal to metal contact between rod and bracket.

### NOTES

1. Springs have 50% additional travel to solid beyond rated load.
2. Isolators should be selected in the range of -30% to +25% of rated load.
3. Consult spring chart for isolator performance data.
4. Nuts, washer & rods by others.

Notes / Remarks :

Project :  
Client :  
Consultant :  
Representative :

Title :

**HNSSA**  
**Neo-Spring™ Hanger**  
**(1" deflection)**

Drawing no.  
**S-2400.07**

Rev. 0