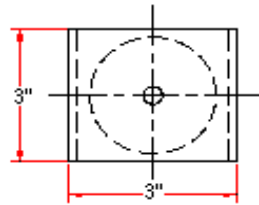
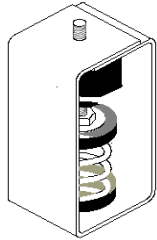


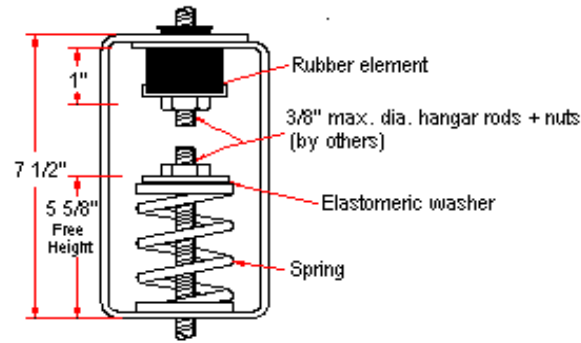
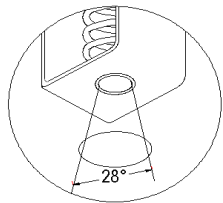
VIBRATION MANAGEMENT CORPORATION

3532-A EAST TC JESTER , BROOKWOOD BUSINESS PARK , HOUSTON , TEXAS 77018 , U.S.A

INTERNET ADDRESS: www.vimco.biz



ISOLATOR MODEL	RATED LOAD (lbs)	SOLID LOAD (lbs)
HSB-HM-140	66	100
HSB-HM-141	133	200
HSB-HM-142	250	375
HSB-HM-143	333	500
HSB-HM-144	476	714
HSB-HM-147	953	1430



N.T.S.

FEATURES

- * Oil + water resistant rubber element
- * High deflection, low natural frequency
- * Rubber element incorporates projected collar to prevent metal to metal contact between rod and bracket.

NOTES

1. Springs have 50% additional travel to solid beyond rated load.
2. Isolators should be selected in the range of -30% to +25% of rated load.
3. Consult spring chart for isolator performance data.

Notes / Remarks :

Project :
Client :
Consultant :
Representative :

Title :

HSB-HM
Neo-Spring™ Hanger
(2" deflection)

Drawing no.
S-2400.16

Rev. 1