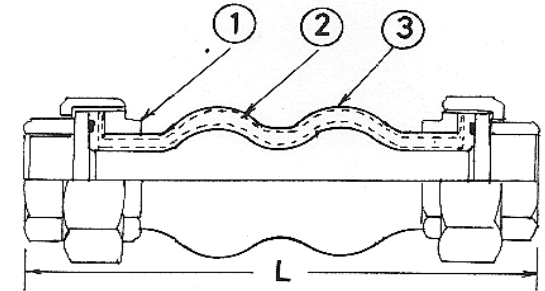


# VIBRATION MANAGEMENT CORPORATION

5930 THOMAS ROAD , HOUSTON , TEXAS 77041 , U.S.A

INTERNET ADDRESS: [www.vimco.biz](http://www.vimco.biz)

MODEL	SIZE (inches)	LENGTH (L) (inches)	AXIAL COMPRESSION (inches)	AXIAL ELONGATION (inches)	TRANSVERSE DEFLECTION (inches)	ANGULAR DEFLECTION (deg)	OPERATING PRESSURE (psig)	BURST PRESSURE (psig)	TEMP. RANGE (°F)
FCU-5	1/2	8	7/8	1/4	7/8	30°	150	700	14 - 158
FCU-7	3/4	8	7/8	1/4	7/8	30°	150	700	14 - 158
FCU-10	1	8	7/8	1/4	7/8	25°	150	700	14 - 158
FCU-12	1 1/4	8	7/8	1/4	7/8	25°	150	700	14 - 158
FCU-15	1 1/2	8	7/8	1/4	7/8	20°	150	700	14 - 158
FCU-20	2	8	7/8	1/4	7/8	15°	150	700	14 - 158



N.T.S.

\* Ratings indicated above are for constant pressures at 100°F. For pulsating pressures use 1/2 of rating, for surge pressures use 1/6 of rating. For higher temperature applications contact factory.

## NOTES

1. Applicable fluids for standard construction: Water(cold, hot or sea), weak acids, alkalies, compressed air etc.
2. Expansion joints must be installed per FSA technical handbook guidelines and control units must be installed if system pressure (test/surge/operating) exceeds 150psig to prevent voiding warranty.

## FEATURES

- \* Reduces noise and vibration transmission.
- \* Eliminates stress due to thermal expansion and piping misalignment.
- \* Double bellow design allows for greater axial, transverse, and angular movements.
- \* Precision molded of synthetic rubber.
- \* Synthetic fabric re-inforcement
- \* Corrosion resistant materials
- \* Easy field installation

## MATERIALS (see figure)

No.	Description
1	Union - malleable iron (threading available as per NPT/BSPT)
2	Reinforcing fabric - polyester
3	Tube + Cover - EPDM

Notes / Remarks :

Project :  
Client :  
Consultant :  
Representative :

Title :

**FCU**  
**Rubber Expansion Joints**  
**Twin Bellow**  
**Union Connection**

Drawing no.  
**S-2500.01**  
  
Rev. 3