

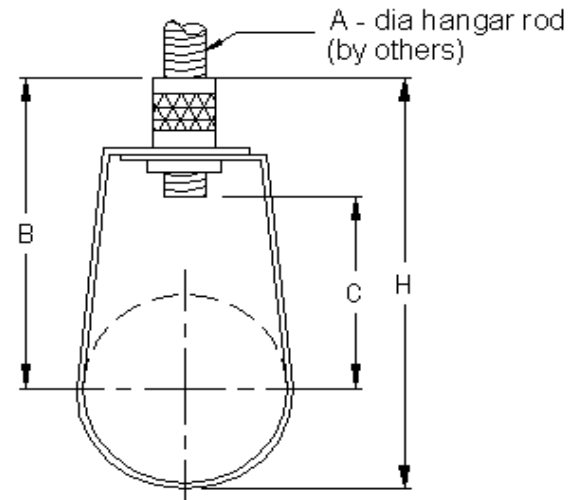
# VIBRATION MANAGEMENT CORPORATION

5930 THOMAS ROAD , HOUSTON , TEXAS 77041 , U.S.A

INTERNET ADDRESS: [www.vimco.biz](http://www.vimco.biz)



MODEL	PIPE SIZE (inches)	PART DIMENSIONS (inches)				MAX. LOAD (lbs)
		B	C	H	A	
ASRH-5-x	1/2	2 3/8	1 1/4	2 7/8	3/8	180
ASRH-7-x	3/4	2 3/8	1 5/16	3	3/8	180
ASRH-10-x	1	2 5/8	1 1/2	3 3/8	3/8	180
ASRH-12-x	1 1/4	2 7/8	1 11/16	3 3/4	3/8	180
ASRH-15-x	1 1/2	3 1/8	1 15/16	4 1/8	3/8	180
ASRH-20-x	2	3 1/2	2 5/16	4 3/4	3/8	180
ASRH-25-x	2 1/2	4	2 5/8	5 1/2	1/2	300
ASRH-30-x	3	4 1/2	3 1/8	6 3/8	1/2	300
ASRH-35-x	3 1/2	4 15/16	3 9/16	7	1/2	300
ASRH-40-x	4	5 3/16	3 5/8	7 1/2	5/8	475
ASRH-50-x	5	5 23/32	4 1/8	8 5/8	5/8	475
ASRH-60-x	6	6 13/16	5 1/16	10 1/4	3/4	950
ASRH-80-x	8	8 1/16	6 5/16	12 1/2	3/4	950



### NOTES

- Choose appropriate model for required finish:  
P-Plain. G-Electro Galvanized. H-Hot Dip Galvanized (non-threaded components only).
- To order ring hanger only without swivel nut, specify model RH instead of ASRH.
- Add "L" to model suffix to add 1/8" internal elastomeric lining (e.g. ASRH-L). Horizontal ID of lined hanger will reduce by 1/4"

### APPLICATION

- \* Suspension of insulated / non-insulated pipes with allowance for vertical adjustment.

### SPECIFICATIONS

- \* Complies with Federal Specification A-A-1192A (Type 10)
- \* Complies with ANSI/MSS SP-58-2009 (Type 10)

### MATERIALS

Item	Description
Bracket	Low carbon steel
Knurled nut	Low carbon steel

### FEATURES

- \* Knurled nut allows for vertical adjustment of pipe after installation.
- \* Engineered 'swivel' design suitable for non-linear piping layout.

Notes / Remarks :	Project :	Title : <b>ASRH</b> Adjustable Swivel Ring Hanger	Drawing no. <b>S-2730.11</b>
	Client :		
	Consultant :		
	Representative :		
			Rev. 4