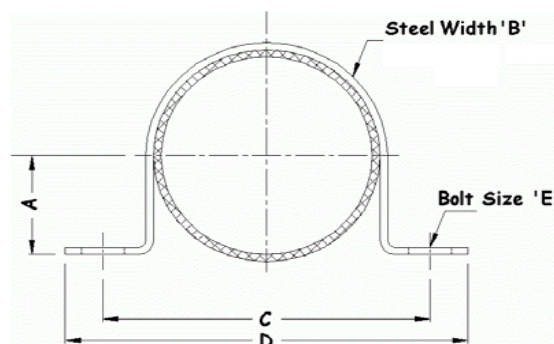


VIBRATION MANAGEMENT CORPORATION

5930 THOMAS ROAD , HOUSTON , TEXAS 77041 , U.S.A

INTERNET ADDRESS: www.vimco.biz

MODEL	PIPE SIZE (inches)	PART DIMENSIONS (inches unless otherwise noted)				
		A	B	C	D	E
SUC-05-x	1/2	0.35	1	2.12	3.11	5/16
SUC-07-x	3/4	0.47	1	2.36	3.34	5/16
SUC-10-x	1	0.61	1	2.63	3.62	5/16
SUC-12-x	1 1/4	0.74	1	2.91	3.89	5/16
SUC-15-x	1 1/2	0.86	1	3.14	4.13	5/16
SUC-20-x	2	1.10	1	3.62	4.60	5/16
SUC-22-x	2 1/2	1.12	1	3.97	4.96	5/16
SUC-27-x	--	1.33	1	4.56	5.74	3/8
SUC-30-x	3	1.65	1	5.19	6.37	3/8
SUC-35-x	--	1.81	1	5.70	6.88	3/8
SUC-40-x	4	2.14	1	6.18	7.36	3/8
SUC-45-x	--	2.36	1	6.61	7.79	3/8
SUC-52-x	5	2.57	1	7.36	8.54	3/8
SUC-55-x	--	2.93	1	7.75	8.93	3/8
SUC-60-x	6	3.16	1	8.22	9.40	3/8
SUC-65-x	--	3.32	1 1/2	8.50	9.68	3/8
SUC-70-x	--	3.56	1 1/2	9.25	10.4	3/8
SUC-77-x	--	3.87	1 1/2	9.96	11.1	3/8
SUC-80-x	8	4.19	1 1/2	10.2	11.4	3/8
SUC-89-x	--	4.58	1 1/2	11.6	13.2	1/2
SUC-95-x	10	5.05	1 1/2	12.7	14.3	1/2
SUC-105-x	--	5.59	1 1/2	13.6	15.2	1/2
SUC-115-x	--	6.00	1 1/2	14.5	16.1	1/2
SUC-120-x	12	6.20	1 1/2	14.8	16.4	1/2
SUC-130-x	--	6.63	2	16.1	18.1	5/8
SUC-140-x	14	6.85	2	16.6	18.5	5/8
SUC-145-x	--	7.14	2	17.2	19.1	5/8
SUC-155-x	--	7.59	2	18.1	20.1	5/8
SUC-160-x	16	7.83	2	18.3	20.5	5/8
SUC-165-x	--	8.18	2	19.1	21.3	5/8
SUC-175-x	18	8.60	2	20.4	22.4	5/8
SUC-185-x	--	9.15	2	21.1	23.3	5/8
SUC-200-x	20	9.84	2	22.3	24.5	5/8
SUC-210-x	--	10.30	2	23.5	25.5	5/8
SUC-220-x	--	10.80	2	24.3	26.5	5/8
SUC-230-x	--	11.30	2	25.5	27.5	5/8
SUC-240-x	24	11.80	2	26.3	28.5	5/8
SUC-280-x	28	13.80	2	30.5	32.7	5/8



NOTES

- Choose appropriate model for required finish:
P-Plain. G-Electro Galvanized. H-Hot Dip Galvanized (non-threaded components only).
- Refer page 2 for size selection table for insulated / non-insulated pipes.
- Add "L" to model suffix to add 1/8" internal elastomeric lining (e.g. SUCL). Horizontal ID of lined hanger will reduce by 1/4"
- Models SUC-25, SUC-34, SUC-50, SUC-67, SUC-75, SUC-100, SUC-110, SUC-147, SUC-170, SUC-180, SUC-190 have been discontinued and may be sold till stocks last with factory / distributors.

APPLICATION

* Support, guide or anchor of insulated / non-insulated pipe flush with mounting surface.

MATERIALS

Item	Description
Clamp	Low carbon steel

FEATURES

- * Simple, quick installation.
- * Bracket can be welded directly to structure or bolted in place using mounting holes which are furnished as standard.

SPECIFICATIONS

- * Complies with Federal Specification A-A-1192A (Type 8)**
- * Complies with ANSI/MSS SP-58-2009 (Type 8)**
- ** for use as clamp only

Notes / Remarks :	Project :	SUC U Clamp	Drawing no. S-2736.21 (2 pages) Rev. 5
	Client :		
	Consultant :		
	Representative :		

VIBRATION MANAGEMENT CORPORATION

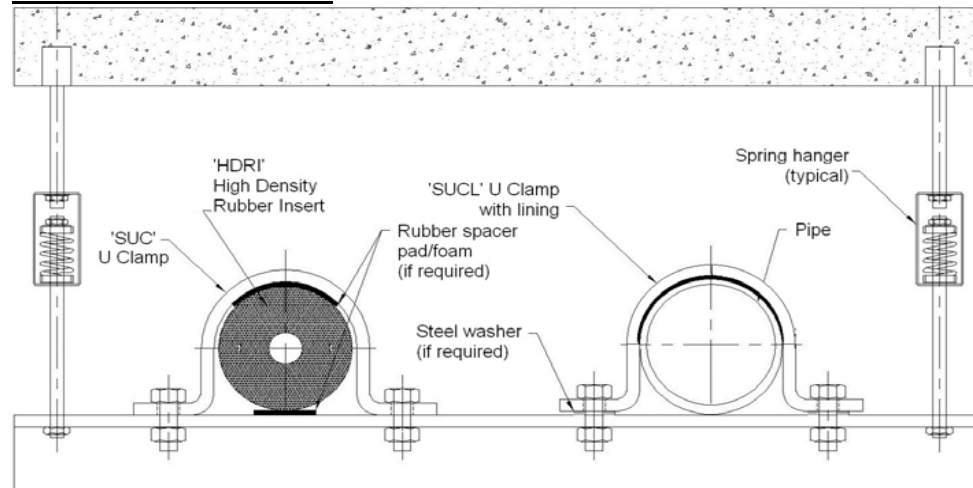
5930 THOMAS ROAD , HOUSTON , TEXAS 77041 , U.S.A

INTERNET ADDRESS: www.vimco.biz

SELECTION TABLE FOR COMMON PIPE / INSULATION SIZES

NOMINAL M.S. PIPE SIZE (inches)	INSULATION THICKNESS							
	0"	3/4"	1"	1-1/4"	1-1/2"	2"	2-1/2"	3"
1/2	SUC-05	SUC-20	SUC-22	SUC-27	SUC-35	SUC-40	SUC-52	SUC-60
3/4	SUC-07	SUC-22	SUC-27	SUC-30	SUC-35	SUC-45	SUC-52	SUC-65
1	SUC-10	SUC-22	SUC-30	SUC-34	SUC-40	SUC-45	SUC-55	SUC-65
1 1/4	SUC-12	SUC-27	SUC-30	SUC-35	SUC-40	SUC-52	SUC-60	SUC-70
1 1/2	SUC-15	SUC-30	SUC-35	SUC-40	SUC-45	SUC-55	SUC-60	SUC-70
2	SUC-20	SUC-35	SUC-35	SUC-45	SUC-45	SUC-55	SUC-65	SUC-77
2 1/2	SUC-22	SUC-35	SUC-40	SUC-52	SUC-52	SUC-60	SUC-77	SUC-80
3	SUC-30	SUC-45	SUC-52	SUC-55	SUC-55	SUC-70	SUC-77	SUC-89
4	SUC-40	SUC-55	SUC-60	SUC-65	SUC-70	SUC-77	SUC-89	SUC-95
5	SUC-52	SUC-65	SUC-70	SUC-77	SUC-77	SUC-89	SUC-95	SUC-105
6	SUC-60	SUC-77	SUC-80	SUC-89	SUC-89	SUC-95	SUC-105	SUC-115
8	SUC-80	n/a	SUC-95	SUC-105	SUC-105	SUC-120	SUC-130	SUC-145
10	SUC-95	n/a	SUC-120	SUC-120	SUC-130	SUC-145	SUC-155	SUC-165
12	SUC-120	n/a	SUC-145	SUC-145	SUC-155	SUC-160	SUC-175	SUC-185
14	SUC-140	n/a	SUC-160	SUC-160	SUC-165	SUC-175	SUC-190	SUC-200
16	SUC-160	n/a	n/a	n/a	n/a	SUC-200	n/a	SUC-220
18	SUC-175	n/a	n/a	n/a	n/a	SUC-220	n/a	SUC-240
20	SUC-200	n/a	n/a	n/a	n/a	SUC-240	n/a	n/a
24	SUC-240	n/a	n/a	n/a	n/a	SUC-280	n/a	n/a
28	SUC-280	n/a	n/a	n/a	n/a	n/a	n/a	n/a

TYPICAL INSTALLATION



Steel washer(s) and/or rubber spacers (pad/foam) as shown above may be required in some cases.