

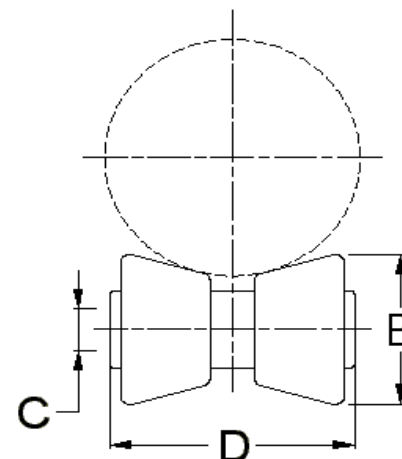
# VIBRATION MANAGEMENT CORPORATION

5930 THOMAS ROAD , HOUSTON , TEXAS 77041 , U.S.A

INTERNET ADDRESS: [www.vimco.biz](http://www.vimco.biz)



MODEL	PIPE SIZE (inches)	PART DIMENSIONS (inches)			MAX. LOAD (lbs)
		B	C (Axle dia.)	D	
SR-20.35-x	2	1 7/8	1/2	2 3/4	390
	2 1/2	1 7/8	1/2	2 3/4	390
	3	1 7/8	1/2	2 3/4	390
	3 1/2	1 7/8	1/2	2 3/4	390
SR-40.60-x	4	2 1/16	1/2	3 3/4	950
	5	2 1/16	1/2	3 3/4	950
	6	2 1/16	1/2	3 3/4	950
SR-80.100-x	8	3 1/4	3/4	6	2100
	10	3 1/4	3/4	6	2100
SR-120.140-x	12	4	7/8	8	3075
	14	4	7/8	8	3075
SR-160.200-x	16	4 1/2	1 1/8	9	4980
	18	4 1/2	1 1/8	9	4980
	20	4 1/2	1 1/8	9	4980
SR-220.240-x	22	4 7/16	1 1/4	10	6100
	24	4 7/16	1 1/4	10	6100
SR-260.300-x	26	5 1/2	1 3/4	12 1/2	7500
	28	5 1/2	1 3/4	12 1/2	7500
	30	5 1/2	1 3/4	12 1/2	7500
SR-360.420-x	36	6	2	14 7/8	12000
	38	6	2	14 7/8	12000
	40	6	2	14 7/8	12000
	42	6	2	14 7/8	12000
SR-440.600-x	48	7 13/32	2	17	12000
	54	7 13/32	2	17	12000
	60	7 13/32	2	17	12000



### MATERIALS

Item	Description
Roller	Cast Iron

### NOTES

1. Choose appropriate model for required finish:  
P-Plain. G-Electro Galvanized. H-Hot Dip Galvanized (non-threaded components only).
2. Refer protection shield catalogs for sizing information for insulated pipes.

### APPLICATION

- \* Support of insulated / non-insulated pipes where longitudinal movement, due to expansion and contraction, may occur.

Notes / Remarks :

Project :  
Client :  
Consultant :  
Representative :

Title :

**SR**  
**Short Roller**

Drawing no.

**S-2739.12**

**Rev. 5**